

Read this brochure,
then fill out and
return the pre-paid
survey card for a
chance to win a
\$500 gift card.

Natural Gas Pipeline safety and Emergency Information

For our neighbours

Contents:

Recognizing pipeline markers	2
Locating underground utilities: using the Call or Click Before You Dig system	5
Crossing or traversing right-of-way (ROW)	6
Know the warning signs of a leak	11
Critical safety information	11
Contacting Enbridge in emergency/ non-emergency situations	16

Emergency number: 1-888-444-6677

The Public Awareness Program

Keeping in touch with you is very important to us. That's why we contact those who live and work near our systems on an ongoing basis.

Our Public Awareness Program is dedicated to informing and educating our neighbours about the presence of pipelines in their community and how to live, work and play safely around them.

As part of this program, we distribute information to landowners, residents, business owners and community members near our operations to provide them with important information about our safety and maintenance programs, damage prevention and emergency preparedness and response procedures.

Before performing any activity that disturbs the ground within the prescribed area, or constructing a facility on, along, across or under a pipeline, please visit clickbeforeyoudig.com or contact your local one-call centre:

Atlantic Dig Safe

 1-866-344-5463

 atlanticdigsafe.ca

**Click
Before
You Dig.com**

In case of emergency

Our pipeline is monitored 24/7. If you suspect a pipeline emergency, please find a safe place to call 911 and then call the 24-hour emergency number for Maritimes & Northeast Pipeline at:

 **1-888-444-6677**

How to reach us


Maritimes & Northeast Pipeline

1-888-444-6677, our menu options are:


- 1 For emergencies
- 2 For locate requests
- 3 For all other general information questions.

More information can also be found by visiting www.mnpp.com.

Canadian Public Awareness Program
(non-emergencies only):

 Phone
1-877-640-8665
(Public Awareness hotline)

 Email
cdnpublicawareness@enbridge.com

 Mail
Public Awareness Program
200, 425 1 St. S.W.
Calgary, AB T2P 3L8

 Website
enbridge.com/publicawareness

Pipeline safety: A shared responsibility

Under the Canadian Energy Regulator (CER) Act and associated regulations, the responsibility to prevent pipeline damage is shared between the pipeline company (Maritimes & Northeast) and anyone who plans to conduct an activity near a pipeline (you, our neighbours).

Our responsibility is to educate you on how to safely conduct activities near our pipeline. In turn, your responsibility is to ensure that before any activity commences, you've received the necessary approvals and confirmed the location of any underground infrastructure.

Damage Prevention Program

Enbridge maintains a Damage Prevention Program in accordance with federal guidelines. The purpose of this program is to prevent damage to our pipeline facilities from excavation activities such as digging, trenching, blasting, boring, tunneling, or backfilling or other activities such as heavy equipment crossing, storage on the right-of-way (ROW), etc. The Damage Prevention Program also monitors the depth of cover over our pipelines and conducts regular patrols of our ROW to monitor for unauthorized activities.

Your role

As a landowner or tenant, business owner or community member along Maritimes & Northeast's pipeline ROW, you have an important role to play in pipeline safety. That's why we've created this brochure to provide you with the important information needed to help keep you safe.

Reporting suspicious activity

If you notice any suspicious or unusual activity on or near the pipeline ROW, please contact Maritimes & Northeast immediately. Your call is always appreciated.

Suspicious or unusual activities could include:

- Inquiries or questions being asked about our pipeline, facilities or employees that do not relate to normal operations
- Threats being made or acts of vandalism against Maritimes & Northeast's pipeline, facilities or employees
- Surveillance by an individual or group which involves taking pictures, videos or monitoring facilities with binoculars
- Abandoned packages, equipment or vehicles left near our pipeline or facilities

By observing ROW safety precautions and damage prevention requirements, as well as keeping in touch, you can help prevent incidents and minimize their impacts.

Please read and share the information in this brochure with others in your home or business and then store in a safe and accessible place.



Pipeline markers do **NOT** indicate exact location of a pipeline. Call or Click Before You Dig to have the location marked.

Pipeline ROW and pipeline location

A pipeline follows a narrow, clear stretch of land, called a ROW, that allows our employees and contractors to access the pipeline for inspections, maintenance, testing and emergencies. Approximate location of the pipeline can be determined by the pipeline marker. A few important notes when it comes to ROWs and pipeline markers:

- Markers should never be removed or relocated.
- If an emergency is suspected or discovered, call the number on the marker.
- The ROW must remain clear. Structures, stockpiles, stored equipment and burn piles are not permitted within the ROW.
- The pipeline marker displays the operator's name, the contents and an emergency phone number.
- Markers should not be used to give exact locations and are not alternative to contacting clickbeforeyoudig.com.

Canada Energy Regulator (CER) requirements

The cross-border pipeline operated by Maritimes & Northeast is regulated by CER, and the company must comply with specific pipeline standards and regulations. These regulations help maintain the safety of our pipeline while allowing certain activities to occur, after review and under certain conditions.

Ground disturbance, excavation, vehicle and mobile equipment crossing and construction within the ROW and prescribed area are all subject to the legal requirements of the *CER Act, the CER Pipeline Damage Prevention Regulations—Authorizations, and Pipeline Damage Prevention Regulations—Obligations of Pipeline Companies*.

As damage prevention is a shared responsibility, the Damage Prevention Regulations (DPRs) apply to any person or company planning or undertaking an activity near a CER-regulated pipeline. *CER Pipeline Damage Prevention Regulations—Authorizations* sets out in more detail the conditions under which ground disturbance, excavation and construction activities in the prescribed area can be conducted safely. *CER Pipeline Damage Prevention Regulations—Obligations of Pipeline Companies* establishes the responsibilities of the pipeline company to the person proposing or conducting the activity and to the CER.

More information about CER requirements can be found at cer-rec.gc.ca.

Consent within the prescribed area and ROW

The prescribed area is a 30-m strip of land, measured perpendicularly from the centreline of pipe(s).

The DPRs require that within this area, activities causing, or that might cause, a ground disturbance cannot occur without written consent from the pipeline company. If written consent for the activity is granted, you must then make a locate request to confirm the location of the pipeline and any other underground utilities. All planned construction activities on, along, under or across the pipeline must also receive approval from Maritimes & Northeast, and a locate request, before going ahead.

Written consent from Maritimes & Northeast is also required for vehicle or mobile equipment crossings within the ROW.

Ground disturbance

A ground disturbance is any work, operation or activity that results in the disturbance of the earth.

If you plan to carry out ground disturbance activities within the prescribed area you must consult with and receive consent from Maritimes & Northeast before moving ahead. We will work with you to evaluate the request.

The illustration on the next page provides some guidance on where written consent is required. If you are unsure if your planned activity requires a locate request or written consent, please contact Maritimes & Northeast Pipeline.

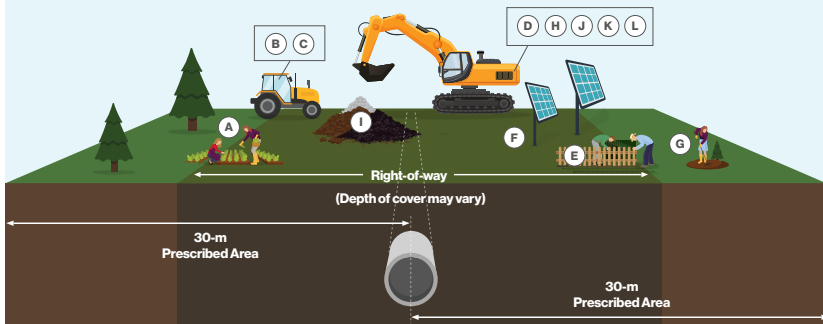
All ground disturbance activities require a locate request through the one-call system.

Activities that do not require consent

- (A) Ground disturbance less than 30 cm below the surface (e.g. planting flowers)
- (B) Agricultural cultivation less than 45 cm deep (unless notified by the pipeline company that it's unsafe to do so in certain areas)
- (C) Operating vehicles or mobile equipment across a pipeline which are used for normal farming operations

Activities that DO require consent

- (D) Ground disturbance depths of 30 cm or more (excavating, digging, trenching, land leveling, topsoil stripping, deep tilling, subsoiling and grading)
- (E) Installing/constructing a fence, retaining wall or structure
- (F) Installing or placing facilities on, along, under or across the pipeline
- (G) Landscaping, tree planting, clearing and removing stumps
- (H) Constructing roads, paving, parking areas, driveways, ditches
- (I) Stockpiling materials
- (J) Drainage or irrigation systems (including dykes, ditches and culverts)
- (K) Crossing a pipeline while not on an upgraded and traveled portion of an established highway or public road with vehicles or mobile equipment
- (L) Blasting/use of explosives



Modified from CER image in "Pipeline Damage Prevention Regulations" information product.

> Maritimes & Northeast's cross-border and interprovincial pipeline is regulated by the CER and must comply with specific pipeline standards and regulations. In addition to the ROW, where the pipeline is located, CER has established a 30-m prescribed area on either side of the pipeline—measured perpendicularly from the centreline of the pipe—to protect the public, the environment and the pipeline. **If planning to conduct any ground disturbance in this area, written consent from Maritimes & Northeast is first required.**



Risk: Safe digging practices can save your life. Failure to do so can endanger yourself, emergency responders and your community.

If you see someone digging or disturbing the soil and there are no flags or marks on the ground, please stop the activity and ask the person to visit clickbeforeyoudig.com or contact your local One-Call centre before continuing. One should not rely on word-of-mouth, maps, memory or pipeline markers when planning a digging project.

One-call requirements



At least three business days before your project—any time you will disturb the soil—visit clickbeforeyoudig.com. If possible, mark the proposed project area with white flags or paint.



When you Call or Click Before You Dig, you'll either be connected to a representative or redirected to a guided online form where you'll be asked to provide important details about your project, such as the type of work you'll be doing, where you'll be doing it and when your project is expected to begin.



Click Before You Dig will provide this information to companies with buried utilities near the work site, saving you the time and trouble of contacting them individually. Within a few days, professional locators will come to your location and mark underground utility lines—including pipelines (marked with yellow flags or paint).



Make sure that all companies listed on your one call ticket have marked or cleared the work site and that you have waited until the listed work start time. Avoid digging near markings in order to save yourself from possible injury or property damage. A company representative will contact you for additional requirements for work within 30 m of a Maritimes & Northeast pipeline.



Crossings for agricultural activity

The DPRs define agricultural activity as:

- The production of crops and the raising of animals, including pasturing
- Cultivation activities such as tillage, plowing, disking and harrowing

For the purpose of these activities, the DPRs authorize persons operating agricultural vehicles or mobile equipment to cross the pipeline under certain conditions:

- 1 The loaded axle weight and tire pressures of the vehicle or mobile equipment are within the manufacturer's approved limits and operating guideline
- 2 The point of crossing has not been the subject of a notification from the pipeline company that crossing at that location could impair the pipeline's safety or security

Mobile equipment and vehicle crossings

Federal regulations also require that anyone wanting to cross the pipeline with vehicles (including recreational vehicles like 4X4s, all-terrain vehicles (ATV), utility vehicles (UTV), snowmobiles and motorcycles) or mobile equipment (outside of a travelled portion of a highway or public road) must have the pipeline company's written consent before doing so.

Before crossing a Maritimes & Northeast pipeline, we must first be notified to assess if the vehicle, machinery or mobile equipment is safe to cross our system.

Engineering assessments may also be required for larger equipment, so please be sure to contact us early to allow sufficient time for review, assessment and documentation of your application. Once we've evaluated the request and confirmed whether or not the vehicle may cross safely, we will provide the necessary written consent or work with you on modifications as required.

Crossing, construction of a facility and ground disturbance activity must not proceed until the locating and marking of the pipeline, written approvals, and any possible mitigating factors, have been addressed.

In order for Maritimes & Northeast to do an assessment, we will require the following information:

- The owner's name
- Scope of proposed work activity
- Timeframe of proposed work
- Plans showing crossing location
- Description and specifications for all equipment to be used
- Land description and GPS coordinates



Agricultural activities: drainage improvements

If you are planning to improve drainage across or within the ROW, you must consult with us first.

Any excavation near the pipeline ROW must be supervised a Maritimes & Northeast representative. Consulting with us as early as possible regarding your drainage proposal, including installing drain tiles, ditching, grading or deep tilling, will allow us to assess your work and set safe work procedures when working within the pipeline ROW or within the 30-m prescribed area.

For installations across the ROW, written permission is required.

A crossing application with tile design layout must be sent to Maritimes & Northeast early for our review and assessment.

To request written consent, contact us at **1-888-444-6677**.

Ground disturbance activities within the prescribed area must not proceed until the locating and marking of the pipeline, and any possible mitigating factors have been addressed. Among other requirements, the person must also have written consent from Maritimes & Northeast to conduct the activity.

Unauthorized activity and Administrative Monetary Penalties (AMPs)

Certain contraventions of the CER Act and its associated regulations, such as the DPRs, must be reported by the pipeline company to the CER.

Such contraventions, known as unauthorized activities, can result in the CER imposing financial penalties called AMPs on companies or individuals when enforcement tools, such as letters, orders or voluntary commitments are not working to prevent unauthorized activity.

Unauthorized activities such as not contacting Atlantic Dig Safe (or Maritimes & Northeast directly) to have facilities located, or crossing the pipeline with vehicles or mobile equipment for non-agricultural activities, are actions that could be subject to AMPs.

The CER Act sets the maximum daily fines of up to \$25K for individuals and \$100K for companies per violation.

More information about the DPRs and AMPs can be found on the CER website at **cer-rec.gc.ca**.

Crossing during an emergency

If a crossing is required while responding to an emergency, please call Maritimes & Northeast's emergency number before crossing the ROW.

➤ **1-888-444-6677**

Non-emergency crossings


Email Maritimes & Northeast at **crossingscanada@enbridge.com** before using the ROW.

If you are planning to construct a facility or conduct a ground disturbance activity near a Maritimes & Northeast pipeline, please follow this safety checklist:

Safety checklist

- 1. Plan your activity.** Identify the location of your work, making sure to look for pipeline marker posts, warning signs or other buried facilities.
- 2. Contact Maritimes & Northeast to obtain written consent.** Contact us to obtain our guidelines for constructing a facility, conducting a ground disturbance activity or vehicle crossing near the pipeline. Remember, written consent is required for the construction of facilities across, on, along or under a pipeline; conducting ground disturbance activities within the prescribed area, and crossing a pipeline with a vehicle or mobile equipment across the ROW (except on the traveled portion of a highway or public road).
- 3. Make a locate request.** At least three working days before the planned activity is to start, contact clickbeforeyoudig.com or contact Atlantic Dig Safe (you can also contact us directly).
- 4. Be on site** when underground facilities are being located to be sure you understand the meaning of the markings.
- 5. Review CER requirements.** Confirm that any persons or companies hired to do work on your behalf, such as contractors, are aware of the necessary obligations.
- 6. Follow all instructions** provided in the authorization, including hand exposing or vacuum excavating the pipe before mechanical excavations within three meters of the pipe and notifying Maritimes & Northeast prior to backfilling. A Maritimes & Northeast representative must be on site during all ground disturbance and backfilling activities.
- 7. Immediately notify Maritimes & Northeast if you come into contact with the pipe or its coating.** Immediately call our 24-hour emergency line at **1-888-444-6677**.



 **Risk:** Ignoring the critical safety information below could create additional hazards for the public, responders and the environment.

Protecting the people, communities and environment near our operations is the most important part of our job.

Pipelines have been proven as the safest transportation mode for energy commodities. While rare, pipeline leaks can happen for a number of reasons. Studies have shown that third-party damage is one of the most common reasons for pipeline leaks or ruptures, which underscores the importance of Call or Click Before You Dig programs.

Internal inspection tools are used to detect potential problems with the pipeline, which enables Maritimes & Northeast to perform investigative digs and repair any anomalies.

Since some commodities are more flammable than others, a pipeline leak or rupture will have different consequences depending on the commodity being transported. Hydrocarbon products such as natural gas and natural gas liquids are very flammable, and can catch fire from even the smallest spark or ignition source.

The sweet gas transported through the Maritimes & Northeast system is flammable and potentially hazardous and explosive under certain conditions.

Properties of natural gas

Natural gas	Property or behaviour
Lighter than air	Natural gas is 40 percent lighter than air.
Composition	Mostly methane and small amounts of ethane.
Hazardous material	Due to its flammability.
Flammable	Approximately 5 -15 percent.
Odourless	Natural gas is odourless in its natural state. The smell of rotten egg often associated with natural gas is normally due to an odourant that is added in some pipelines and distribution systems.
Combustion products	No significant harmful compounds result from natural gas combustion. However, incomplete combustion may produce carbon monoxide.
Ignition temperature	The ignition temperature is nearly 1,200° F / 649° C. Static electricity, pilot lights, matches and sparks from telephones, electric motors and internal combustion engines can easily reach this temperature.
Asphyxiant	Natural gas can displace oxygen in an enclosed space, resulting in the potential for suffocation.
Non-toxic	The sweet gas transported in the Maritimes & Northeast lines is non-toxic.

In the unlikely event of a pipeline leak, one or any combination of the items listed below on or near the right of way can typically help you recognize a leak.



You might see:

- Dirt being blown or appearing to be thrown into the air
- Flames, if gas is ignited
- A white vapour stream or mist-like cloud
- Unexpected frost buildup on the ground
- Dead or dying vegetation in an otherwise green area
- Continuous bubbling in wet areas or at a pond, creek or river



You might hear:

- An unusual roaring, blowing, hissing or loud whistling sound



You might smell:

- Odourized pipelines: An unusual sulphur or rotten egg odour
 - Unodourized pipelines: A slight smell similar to diesel fuel or oil
- Most natural gas has a naturally occurring slight petroleum smell similar to diesel, oil or propane. However, typically when natural gas is distributed into homes and businesses the distributor adds an odourant to enhance the smell of the gas to make it easier to detect a potential leak.*

Possible hazards associated with natural gas pipeline leak or rupture:



Dizziness or suffocation if leak occurs in a confined space



Ignition/fire if ignition source is present during leak, which may result in burns



Potential explosion with the necessary gas to air ratio



Projectiles ejected from the force of escaping gas

What to do in an emergency

Safety is our number one priority. If you suspect a pipeline leak, immediately:

- **Evacuate the area and, if safe to do so, try to prevent others from entering.**
- If you can do so safely, turn off and abandon any mechanized equipment and extinguish any cigarettes. Move as far away from the leak as possible in an upwind direction, avoiding contact with escaping liquids and gases.
- Call 911 from a safe location.
- Call the 24-hour Maritimes & Northeast Pipeline emergency number **1-888-444-6677**.
- Follow instruction provided by M&NP and local emergency responders.
- **If you suspect natural gas has leaked into your house or office, evacuate immediately.**

What NOT to do in an emergency situation



Do not touch or go near the leaking gas, liquid or vapour that may have come from the pipeline.



Do not attempt to extinguish a natural gas fire.



Do not attempt to operate Maritimes & Northeast's pipeline valves.



Do not start your vehicle or any other piece of equipment that can act as a possible ignition source.



Do not light a match or smoke, and avoid heat sources or making sparks that could ignite the leaking gas as you are leaving the area.



Do not turn on or off anything that may create a spark—including cell phones, telephones, light switches, vehicle alarms, vehicle keyless entry and flashlights—until you are in a safe location.

Emergency planning zone (EPZ)

The EPZ is the radial area from any point on the pipeline where emergency planning activities may have to occur in the event of an emergency. EPZs are dependent upon pipeline diameter and the operating pressure. Maritimes & Northeast EPZs range from 100 to 800 m.

Immediate response

Public safety will be the top priority as Maritimes & Northeast, employees, contractors and local emergency responders work together to evaluate and respond to the leak.

- Maritimes & Northeast personnel may shut down or isolate sections of the pipeline.
- Public safety officials and local emergency responders will oversee public safety measures like securing the scene, providing medical aid and other lifesaving services, and getting you the information you need to stay safe.
- Maritimes & Northeast will work with appropriate agencies to remediate any impacts caused by the leak; this may mean entering properties on or near the pipeline to control product.

Emergency management at Maritimes & Northeast Pipeline

Maritimes & Northeast is committed to systematic and effective emergency management programs that apply across the lifecycle of our assets and activities. Our emergency management programs are embedded into the organization to effectively prevent/mitigate, prepare for, respond to and recover from all incidents and emergencies.

Our first goal is to prevent incidents before they happen. If an incident does occur, we're ready to respond safely and effectively through regular training and rigorous qualification procedures, in partnership with local response agencies as well as regional and national authorities. Employees across our organization participate in regular emergency response drills and simulations – both in classroom and field demonstrations – to test and improve procedures. Emergency response training exercises are a key part of our emergency and crisis preparedness plans, as they help to minimize the impact of incidents and form part of our compliance with regulations.

Third-party damage is one of the most common reason for pipeline leaks or ruptures. To help prevent incidents always Call or Click Before You Dig.



From the ground up

While our natural gas pipeline is buried out of sight, beneath the ground in the ROW, we never lose sight of our potential impact on the air, water and land around us. And we never lose sight of our responsibility to preserve all elements of our environment.

In fact, our activities—everything from pipeline design, construction, testing, maintenance, operation and safety practices—are subject to government regulations, which we meet or exceed. When we do disturb the ground, every reasonable effort is made to restore the land to its original condition and to protect the quality of the air and water that sustain us.

Processes and technologies

Maritimes & Northeast has a wide range of programs that help maintain the safety of the pipeline system that runs through your land or near your community. We invest heavily in the tools, technologies, people and strategies we need to make sure our pipeline network has the strength and fitness needed to do the job safely and reliably.

From the purchase of high-quality steel pipe, manufactured to meet stringent criteria, to the cathodic protection system we employ to prevent corrosion once the pipe is installed, Maritimes & Northeast takes seriously the safety of the system, before and during operations.

The processes and technologies we use to prevent and detect leaks include:

- The careful selection and testing of pipe prior to and during the manufacturing process
- X-ray or ultrasonic testing of all welds during construction
- Sophisticated monitoring and control systems that operate around the clock, 365 days a year
- Research and development on technologies designed to prevent corrosion and cracking.
- Tests to confirm pipeline integrity on new pipelines/systems
- The use of durable coating systems and cathodic protection (use of low voltage electric current) to protect pipe from external corrosion

- The use of increasingly sophisticated in-line inspection technologies to measure the size and location of even minute changes in the integrity of every line in our system

People and practices

In addition to developing and putting the right processes and technologies into place, the right people and practices also drive our efforts to keeping our pipeline safe. Some of these initiatives include:

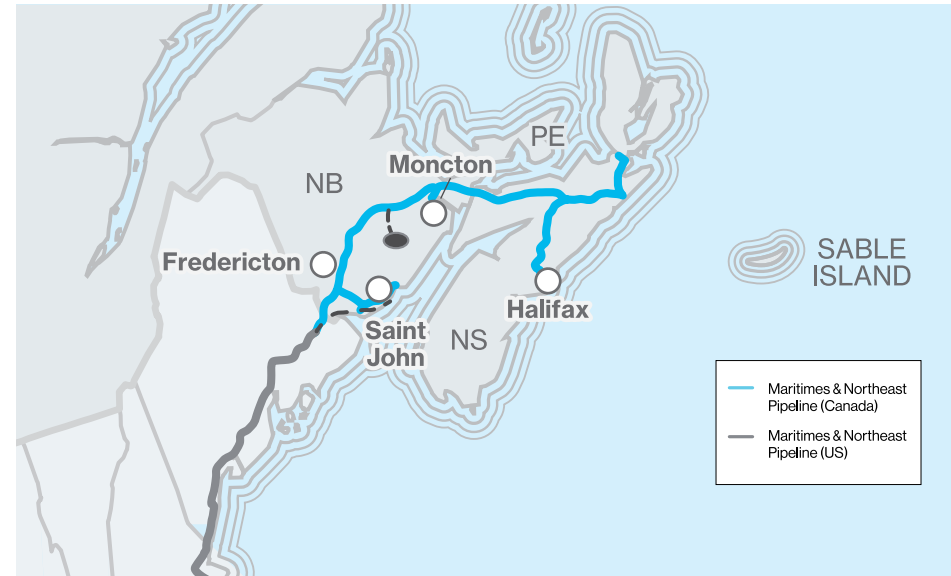
- ROW surveillance and monitoring programs through aircraft and in some areas by land (ground patrols)
- Investigative dig programs and unmanned systems to support pipeline integrity
- Meeting and exceeding industry standards and regulations
- Public awareness education and liaison activities
- Regular training exercises in select locations throughout the year to keep employees' skills fresh
- First responder outreach and exercises with local response agencies and regional and national authorities
- The stationing of emergency response personnel at strategic locations along the pipeline route, close to your community

A collaborative approach to safety

Every day, Maritimes & Northeast transports the energy needed to serve Canadian customers from Point Tupper and Dartmouth, Nova Scotia to Moncton and Saint John, New Brunswick. Our role is to safely and reliably deliver energy, and our commitment to safety is at the core of everything we do. But we know we can't do it alone.

For us, preparedness means developing integrated response plans based on open communication and teamwork.

We work year-round with local emergency officials so that they have the information they require to respond to an emergency and we regularly communicate important information to local governments, community fire and police services, utilities, contractors, residents, business owners, neighbours and tenants, like you.



Life takes energy: to heat our homes, to feed our families, to fuel our vehicles. Maritimes & Northeast Pipeline connects people to the energy they need to help fuel their quality of life.

The Maritimes & Northeast Pipeline system

Maritimes & Northeast Pipeline is a historic project, essential to the development of the natural gas industry in the Maritimes. The pipeline system operates more than 800 km of high-pressure natural gas transmission pipeline in eastern Canada, providing natural natural gas to areas in Nova Scotia, New Brunswick, Maine and the northeastern U.S.

A joint venture of Enbridge Inc. (77.53%), Emera Inc. (12.92%), and ExxonMobil (9.55%), Maritimes & Northeast Pipeline is headquartered in Halifax, Nova Scotia and operates an additional business office in Waltham, Massachusetts.

The Maritimes & Northeast Pipeline system consists of an approximately 30-inch diameter underground mainline running from Goldboro, Nova Scotia through Nova Scotia and New Brunswick to the Canadian – U.S. border near Baileyville, Maine. The pipeline continues through Maine and New Hampshire into Massachusetts where it connects with the existing North American pipeline grid at Dracut, Massachusetts.

This page contains important phone numbers you can use to contact a Maritimes & Northeast Pipeline representative.

If you suspect any suspicious activities along our pipeline, or have any comments or questions, please contact us.

In case of an emergency, please find a safe place to **call 911** and then call the 24-hour emergency number for Maritimes & Northeast at:

1-888-444-6677

For questions regarding agreements, general operations or if you need to plan construction, fencing, digging or explosives use, call:

Nova Scotia & New Brunswick
1-888-444-6677

Call or Click Before You Dig



Any person who intends to construct a facility across, on, along or under a pipeline, operate a motorized vehicle or engage in activity that would cause a ground disturbance within the prescribed area, must make a locate request at least three working days before the day on which the construction or activity is to start. Please visit clickbeforeyoudig.com or contact your local one-call centre:

Atlantic Dig Safe



1-866-344-5463



atlanticdigsafe.ca

You can also contact Maritimes & Northeast directly at **1-888-444-6677**

Links for more information

CER

cer-rec.gc.ca

- **CER Pipeline Damage Prevention Regulations – Authorizations** details the legal conditions under which ground disturbance in the prescribed area and excavation and construction activities near the pipeline (including the ROW) can be conducted safely. It also provides requirements for authorization to cross the pipeline.
- **CER Pipeline Damage Prevention Regulations – Obligations of Pipeline Companies** establishes the responsibilities of the pipeline company to the person proposing or conducting the activity and to the National Energy Board.

Maritimes & Northeast Pipeline Inc.
mnp.com