

Virtual Project Update Meeting

L5 Wisconsin Segment Relocation Project

Agenda

L5 Wisconsin Segment Relocation Project

- Welcome
- Values / Safety Moment
- Project Updates
 - Environment / Permitting
 - Construction Update
 - Tribal Engagement
 - Economic Impact Study Findings
- Audience Q&A
- Wrap Up



Values + Safety Moment

Violence at home signal for HELP



1. Palm to camera and tuck thumb

2. Trap thumb

THE VIOLENCE AT HOME SIGNAL FOR HELP

Use this signal to ask for help on a video call without leaving a digital trace.

If you see this sign on a video call, find out how to help below.

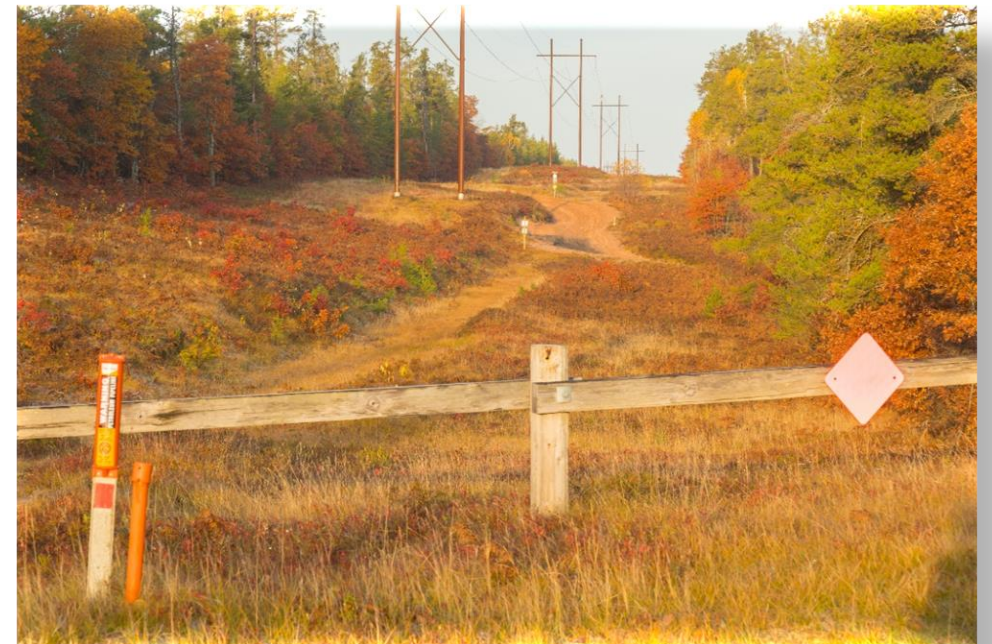
If you see someone use the Signal for Help, **check in with the person safely** to find out what they need and/or want you to do.

They may want to tell you what is happening. They may ask you to listen and be there for them. They may ask for help finding services.

If someone is in immediate danger, call **911**.

Meeting Objectives

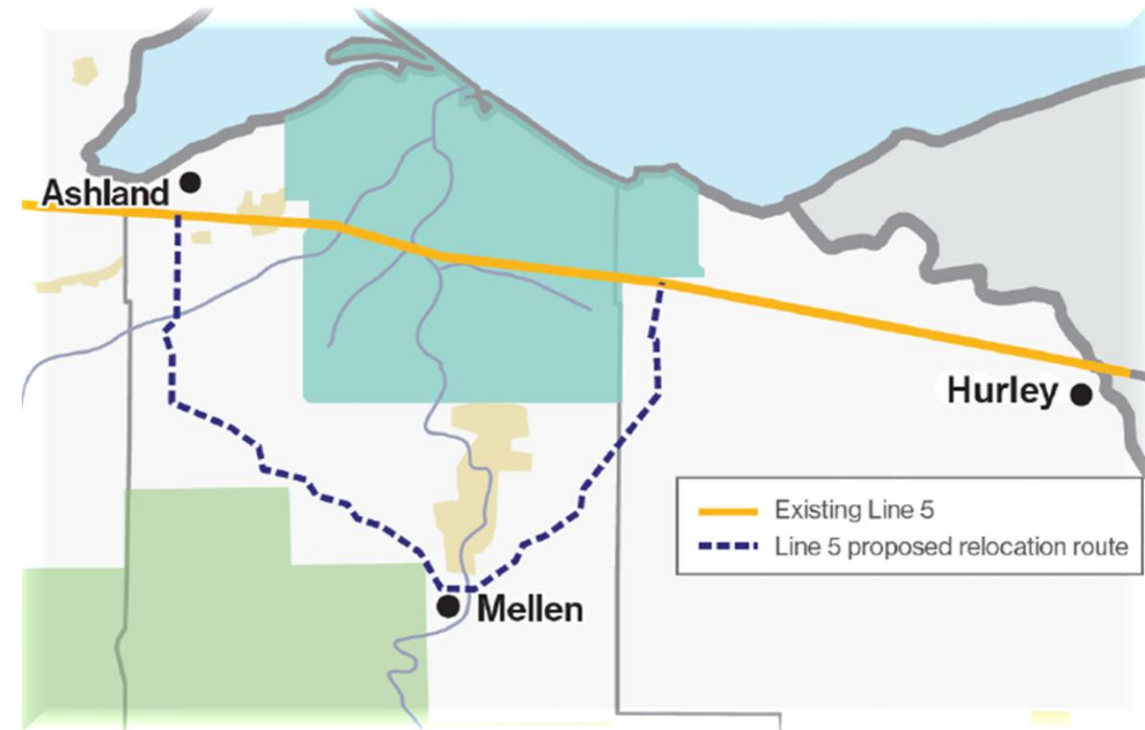
- Provide information on permitting status
- Show you how to access the documents and provide comments
- Update on construction plans
- Share project goals as they relate to tribal economic engagement
- Discuss economic impact study findings



Project Details

Line 5 is a vital link to propane and other energy supplies

- Safely operating since 1953
- Capacity: 540,000 bpd of light crude, light synthetic crude, and NGLs
- Permits filed with WDNR in early 2020
 - Public meeting and comment period, June – July 2020
 - Draft Environmental Impact Statement now available
- Public Service Commission of Wisconsin
 - Secured agreements with 100% of landowners along route; withdrew application, July 2020
- Community Meetings (February 2020 to today)
- Construction upon receipt of permits



Project Leadership



Michelle Johnson
Community Relations



April Holdren
Tribal Engagement



Joe McGaver
Environment



Adam Erickson
Mainline Services

WI Department of Natural Resources



- The Draft Environmental Impact Statement is available for public comment
 - Public Hearing February 2
 - Comment Period ends **March 4, 2022**
- Website: <https://dnr.wisconsin.gov/topic/EIA/Enbridge.html>
 - You can also type in **Enbridge Line 5** in the search feature of the DNR's website

A screenshot of the Wisconsin Department of Natural Resources website. The page has a blue header with the DNR logo and navigation links for 'HUNTING', 'FISHING', 'PARKS', 'CLIMATE', 'ENVIRONMENT', and 'FORESTRY'. Below the header, there is a breadcrumb trail: '» TOPIC » ENVIRONMENTAL IMPACT ANALYSIS'. The main heading is 'ENBRIDGE PIPELINE PROJECTS IN WISCONSIN'. The text below reads: 'Enbridge, Inc. and Enbridge Energy Partners (collectively referred to as "Enbridge"), own and operate a liquid petroleum pipeline system that spans approximately 3,200 miles across North America and has been in operation since 1950's. Detailed information on company ownership and structure is included on the company's websites at [Enbridge Inc.](#) or [Enbridge](#).'. A red-bordered box highlights a section titled 'PUBLIC INPUT OPPORTUNITY - DRAFT EIS ON ENBRIDGE LINE 5'. The text in this box states: 'On Dec. 16, 2021 the DNR released a Draft Environmental Impact Statement (EIS) on Ebridge's proposed relocation of its Line 5 petroleum pipeline in Ashland, Bayfield and Iron Counties. Access the two-volume Draft EIS below, under [Draft Environmental Impact Statement](#).'

WISCONSIN DEPARTMENT OF NATURAL RESOURCES

HUNTING FISHING PARKS CLIMATE ENVIRONMENT FORESTRY

» TOPIC » ENVIRONMENTAL IMPACT ANALYSIS

ENBRIDGE PIPELINE PROJECTS IN WISCONSIN

Enbridge, Inc. and Enbridge Energy Partners (collectively referred to as "Enbridge"), own and operate a liquid petroleum pipeline system that spans approximately 3,200 miles across North America and has been in operation since 1950's. Detailed information on company ownership and structure is included on the company's websites at [Enbridge Inc.](#) or [Enbridge](#).

PUBLIC INPUT OPPORTUNITY - DRAFT EIS ON ENBRIDGE LINE 5

On Dec. 16, 2021 the DNR released a Draft Environmental Impact Statement (EIS) on Ebridge's proposed relocation of its Line 5 petroleum pipeline in Ashland, Bayfield and Iron Counties. Access the two-volume Draft EIS below, under [Draft Environmental Impact Statement](#).

WI Department of Natural Resources



Submit comments via email or US Mail:

DNROEEACOMMENTS@WI.GOV

Line 5 EIS Comments, DNR (EA/7)
101 South Webster Street
Madison, WI 53707

US Army Corps of Engineers



- The St. Paul District is evaluating the permit application using a standard individual permit process. The evaluation includes opportunity for public comment and preparation of an Environmental Assessment.
 - Comment Period ends **February 5, 2022**
- Website: https://www.mvp.usace.army.mil/Enbridge_Line5-WI/
- You can also type in **Enbridge Line 5** in the search feature of the Army Corps of Engineering website

A screenshot of the US Army Corps of Engineers St. Paul District website. The page title is "Enbridge_Line5-WI". The main content area is divided into three columns. The left column is titled "Resources" and contains a "Public Notice" section with a "Permit Application" sub-section. The middle column is titled "Enbridge Line 5 - Wisconsin segment relocation" and contains a "Permit request" section and a "Background" section. The right column is titled "Contact information" and contains the address and email for the St. Paul District, Regulatory Branch. Below the contact information is a "Project location" section with a map showing the "Line 5 pipeline route" from Superior, Wisconsin to Sarnia, Canada.

US Army Corps of Engineers St. Paul District Website

Enbridge_Line5-WI

Resources

Public Notice

Permit Application
Some appendices contain personally identifiable or confidential information and are not included.

[Permit application](#)
[Appendix A - Aerial Route Maps](#)
[Appendix B - Topographic Route Maps](#)
[Appendix C - List of Adjacent Landowners](#) (Contains personally identifiable information)
[Appendix D - Alternatives](#)
[Appendix E - Route Adjustments](#)
[Appendix F - Hydrotest Plan](#)
[Appendix G - Waterbody Bridging Drawings](#)
[Appendix H - HDD and Guided Bore Drawings](#)
[Appendix I - ESURCO Soil Maps](#)

Enbridge Line 5 - Wisconsin segment relocation

Permit request

The St. Paul District of the U.S. Army Corps of Engineers has received a permit application from Enbridge Energy, Limited Partnership (Enbridge). This application has been submitted pursuant to Section 10 of the Rivers and Harbor Act of 1899 (Section 10) for work under a navigable water of the United States and Section 404 of the Clean Water Act (Section 404) for discharges of dredged or fill material into waters of the United States.

Background

The existing Enbridge Line 5 pipeline is a 645 mile long, 30-inch diameter crude oil/natural gas liquid pipeline that has been operational since 1953. It originates at Enbridge's Superior Terminal in Superior, Wisconsin, continues through northern Wisconsin and the Upper and Lower Peninsulas of Michigan, and terminates near Sarnia, Canada. In Wisconsin, the existing Line 5 pipeline crosses Douglas, Bayfield, Ashland and Iron counties. Within

Contact information

U.S. Army Corps of Engineers
St. Paul District, Regulatory Branch
180 5th Street E, Suite 700
Saint Paul, MN 55101

Email: CEMVP-L5WSR-PN-Comments@usace.army.mil

Project location

A map showing the "Line 5 pipeline route" from Superior, Wisconsin to Sarnia, Canada. The route is highlighted in orange and passes through the Upper and Lower Peninsulas of Michigan. The map includes labels for Superior, Wisconsin, and Sarnia, Canada.

US Army Corps of Engineers

Submit comments via email or US Mail:

CEMVP-L5WSR-PN-Comments@usace.army.mil

St. Paul District Corps of Engineers

CEMVP-RD

180 Fifth Street East, Suite 700

Saint Paul, MN 55101-1678



**US Army Corps
of Engineers**
St Paul District

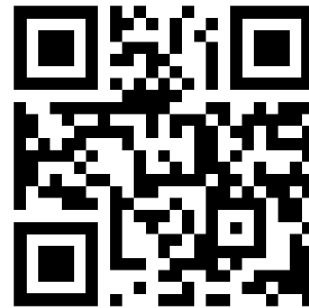
Engineering & Construction Update

- Reminder on field items completed to date:
 - Pipeline centerline and workspaces are laid out
 - Geotech complete
 - Most engineering plans are done
 - Civil Surveys are complete
 - All items needed have been submitted with permit requests
- The big news:

Letter of Intent

MICHEL'S®

For more information: <https://www.Michels.us/>



Tribal Update

- Environmental Justice Commitment Plan
 - Environmental controls / spill prevention and response
 - Invasive species mitigation
 - Tribal monitors
 - Cultural resources identification and avoidance
 - Tribal economic participation and workforce development training
 - Human trafficking awareness and prevention program
 - Authorized hunting, fishing, and gathering
 - Ongoing engagement

Economic Impact Study

L5 Wisconsin Segment Relocation

Methodology

- Approximate project cost: \$450 million to construct 41 miles of new pipeline
 - Of that, approximately \$80 million would be spent in the counties containing the new pipeline segment.
- Enbridge asked **Capital Policy Analytics** to assess the economic impact of construction of the proposed Project on the economies of the: US, Wisconsin, and the three counties of Ashland, Bayfield and Iron.
 - Economists conducted the analysis with the IMPLAN (Economic Impact Analysis and Planning) modeling system (an industry-standard economic impact analysis and planning model) to estimate the Project's economic impact using Enbridge's planned spending and regional and national data. IMPLAN's model captures the complex interrelationships that exist across the economy.

Economic Impact Study

L5 Wisconsin Segment Relocation

Executive Summary

- 1) Project would support more than **1,000 jobs** in the state of Wisconsin; the majority of those jobs would be in Ashland, Bayfield, and Iron counties.
- 2) These jobs go beyond those directly engaged by Enbridge and their contractors for construction; and include indirect jobs from a variety of industries unrelated to construction.
- 3) Retail sales, restaurants and accommodation, and the transportation sector would all see new jobs supported by the Project.
- 4) The Project would ultimately add **\$135 million to Wisconsin's economic output**, with the Project area counties seeing the bulk of this new economic activity.
- 5) Lastly, the Project would result in **Wisconsin's tax revenue increasing by \$6.4 million and federal tax revenues increasing by \$78 million.**

Audience Q&A

Questions?

Email: EnbridgeinWI@enbridge.com

Sign up for our Enbridge in WI Newsletter

For more information: www.Enbridge.com/I5wis

Thank you