



Maintaining safe, reliable access to North American crude oil

Line 3 Replacement Project: maintenance and integrity driven

Crude oil is refined into petroleum products we use every day—from fuel for our cars to heating oil for our homes, to the clothes we wear and the household products we buy.

Enbridge has been safely and reliably transporting crude oil to U.S. refineries through its pipelines for decades. Built in the 1960s, Line 3 is part of the Enbridge crude oil pipeline system known as the Mainline System. Line 3 is a 1,097-mile pipeline from Edmonton, Alberta to Superior, Wisconsin and currently operates below its designed capacity.

Enbridge is replacing Line 3 to maintain high safety standards, reduce future maintenance activities and the resulting disruptions to landowners and the environment, as well as to provide long-term reliable delivery of North American crude oil. This is an integrity and maintenance driven program.

The project includes installing a 36-inch diameter pipeline to replace the existing 34-inch diameter pipeline generally along the existing Line 3 pipeline corridor from Joliette, North Dakota to Clearbrook, Minnesota. The replacement pipeline will follow other existing pipelines and electric power lines for more than 90 percent of the route east of Clearbrook to the Wisconsin border near Superior, Wisconsin.

Line 3 will continue to operate while the replacement pipeline is being installed to ensure the needed supplies of crude oil reach markets throughout North America. The replaced pipeline will be permanently removed from operation, or 'deactivated', once the replacement pipeline is installed, tested, and commissioned for service. To see a video about the Line 3 deactivation process, visit: enbridge.com/line3US.

Project cost

Enbridge's **\$4-billion** private investment in the states of Minnesota, North Dakota and Wisconsin is creating family-supporting jobs, an economic boost for local communities during construction, and community investments and tax contributions for many years to come.

Project need

This purpose of the Project is two-fold:

- Reduce future repair activities and resulting disruptions to landowners and the environment.
- Restore the historical operating capabilities of Line 3, to support North American energy independence.

Line 3 Replacement Project Joliette, ND to Superior, WI

Ownership: Enbridge Energy, Limited Partnership

Length: About 360 miles. Wisconsin and North Dakota segments are complete. As of June 1, 2021 nearly 60 percent of the project was complete in Minnesota.

Pipe: 36-inch diameter

Construction: Following final regulatory and permit approval, construction commenced at Fond du Lac Reservation on Nov 27, 2020 and in December across the state of Minnesota.

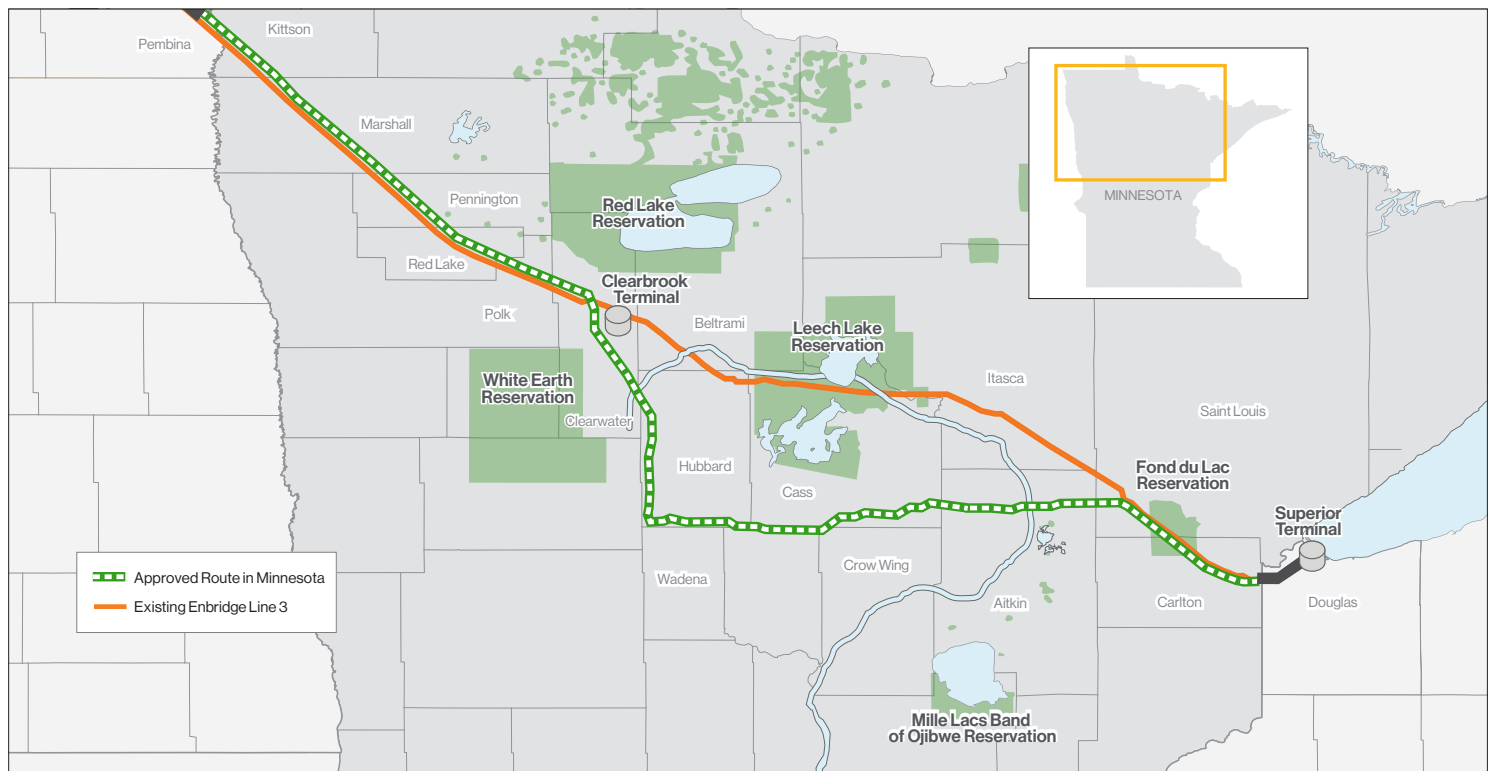
Project timing: We are updating landowners and other stakeholders as we move through the construction process. Pre-construction activities, including surveying, land acquisition, engineering and design, began in 2014.

> Learn more:

enbridge.com/line3US

Toll free phone number: 1-855-788-7812

Email: enbridgeinmn@enbridge.com



Project benefits

A new, technologically advanced pipeline with the latest safety standards to replace the remaining portion of a deteriorating pipeline.

Installing new infrastructure will bring added property tax revenue to Minnesota communities, as well as provide an influx of sales taxes from locally purchased materials and equipment. Thousands of skilled workers and laborers will be needed during peak construction periods resulting in increased local employment opportunities. Many workers will be drawn from local labor halls.

Regulatory oversight and permitting

Interstate liquid petroleum pipelines are regulated by various federal and state laws and regulations. Comprehensive national standards, federal laws and regulations have been developed over many decades that prescribe the design, construction, operation and maintenance of liquid petroleum pipelines. The agency exclusively responsible for regulating interstate crude oil pipeline safety is the U.S. Department of Transportation's

Pipeline and Hazardous Materials Safety Administration's Office of Pipeline Safety, as designated in the Pipeline Safety Act. A number of other federal and state regulatory agencies are involved in the planning and permitting of the Line 3 Replacement Pipeline Project.

More information on pipeline operation and regulation is available at www.pipeline101.org.

The regulatory and permitting process for the Line 3 Replacement Project in Minnesota is progressing following the February 3, 2020 Minnesota Public Utility Commission's (MPUC) reaffirming Certificate of Need and approving the Enbridge preferred route.

Before construction began:

- Enbridge received a Final Authorization to Construction from the MPUC on November 24, 2020.
- There are more than 20 Federal, State and Local permits and approvals received.

Overview of Minnesota Public Utilities Commission (MPUC) decision on February 3, 2020:

- The MPUC reaffirmed from its earlier June 28, 2018 decision that the project is needed and issued a Certificate of Need.
- MPUC examined the revised Final Environmental Impact Statement and comments on the route, and voted to approve the Enbridge preferred route.
- As expected, there are conditions attached to the MPUC's decisions, and many of them were based on commitments that Enbridge had already made. They include provisions to address public safety, a Landowner Choice Program regarding removal of the deactivated Line 3 and Enbridge insurance.

The MPUC decision reaffirms more than five years spent researching, planning and engaging landowners and communities, including more than 3,500 community meetings and more than 70 regulatory meetings to take public comment.

> Learn more:

enbridge.com/line3US

Toll free phone number: 1-855-788-7812

Email: enbridgeinmn@enbridge.com