

For Excavators and Contractors

\$500

Your feedback is important to us. Please fill out and return the pre-paid survey card for a chance to win a \$500 gift card.

Natural gas pipeline safety and emergency information

> Important safety information enclosed.



Alliance Pipeline
Public Awareness
Program, 2020



Enbridge Public Awareness Program
7500 River Road
Richmond, BC V6X 1X6

24-hour Alliance Pipeline emergency number:
1-800-884-8811

All pipeline markers provide the name of the pipeline operator, product being transported and a telephone number for reporting pipeline emergencies.



Click Before You Dig.com

Pipeline safety

You have received this brochure because your company is located near where an Alliance pipeline or associated facilities exist and may be involved in ground disturbance activities such as: excavation-related work, land development, dredging, construction, or facility installations.

This brochure has been designed to provide you with information regarding:

- The presence of pipelines in your community.
- How to work safely near pipelines.
- One-call centre information, including how to have underground utilities properly marked.
- The need for authorization when constructing a facility or vehicle crossings across the pipeline.
- How to recognize, report and respond in the event of an emergency.
- How to contact Alliance in emergency and non-emergency situations.

In case of emergency:

Our pipeline is monitored 24/7. If you suspect a pipeline emergency, please find a safe place to call 911 and then call Alliance's toll-free emergency number.

24-hour emergency number

1-800-884-8811

How you can reach us (non-emergencies only):

Phone
1-877-640-8665

Email
CdnPublicAwareness@enbridge.com

Mail
Public Awareness Program
200, 425 - 1st Street SW
Calgary, Alberta, T2P 3H5

Website
alliancepipeline.com

Alliance Pipeline is a joint venture partnership owned by Enbridge Inc. and Pembina Pipeline Corporation.

In 2018, the Joint Venture announced a new operating and administrative model for Alliance Pipeline that would see Enbridge managing operations for the system. As a result within this brochure you will see contact information that connects you with Enbridge employees.

Please read and then share the information in this brochure with others in your organization.

Our responsibility is to educate you on how to safely conduct activities near our pipelines. In turn, your responsibility is to ensure that before any activity commences, you've confirmed the locations of any underground pipelines and received the necessary written approvals.



Alliance takes seriously the responsibility for the safe operation of its pipeline.

While our pipeline is buried beneath the ground in the right-of-way (ROW), we never lose sight of our potential impact on the air, water and land around us, or on our responsibility to preserve all elements of our environment.

In fact, our activities—including pipeline design, construction, testing, maintenance, operation and safety practices—are subject to government regulations, which we meet or exceed.

If we disturb the ground, every effort is made to restore the land to its original condition and to protect the quality of the air and water that sustain us.

Whether it's wildlife, soil, freshwater or historical artifacts, in every aspect of our business, we work hard to preserve the natural balance of our land. To do that, we carefully plan every project from start to finish, making sure our people know what is expected as well as implementing programs that will help to protect the environment.

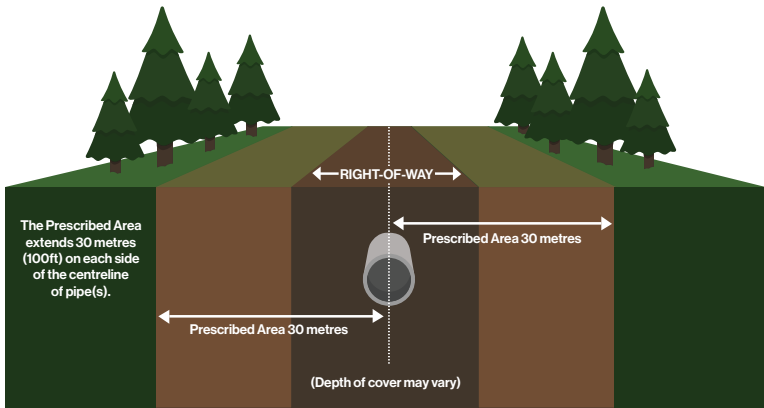
If you would like more information about Alliance's pipeline in your area—including pipeline size, contents transported, or pipeline location—please contact us.

Being responsible for pipeline safety, however, does not mean we are in it alone.

Engaging with communities is important to us. That's why we work year-round to provide safe, reliable operations, and why we regularly communicate important safety information to utilities, contractors, local governments, emergency services, landowners, tenants, regulators and neighbours.

As an excavator, developer or utility company, you also have an important role to play, as your commitment to safe construction and ground disturbance practices reduces the risk of pipeline damage and helps safeguard you and your employees, as well as the communities living and working along the pipeline.

Your safety, and the safety of those living and working near our pipeline, is an important part of our overall safety management system, and we continue to promote good working relationships with excavators, developers and utility companies through industry meetings, personal contact and brochures such as this one.



➤ Alliance’s interprovincial pipeline is regulated by the Canadian Energy Regulator (CER), formerly the National Energy Board, and must comply with specific pipeline standards and regulations. In addition to the right-of-way, where the pipe is located, the CER has established a 30 metre (100 foot) prescribed area on either side of the pipe – measured perpendicularly from the centreline of the pipe – to protect the public, the environment and the pipeline. **You must first place a one-call and obtain written permission from Alliance before conducting any ground disturbance activity in this area.**

The ROW and pipeline markers

A right-of-way (ROW) is a strip of land of varying widths that may contain one or more pipelines.

While the depth and locations of the pipelines can vary within the ROW, the ROW:

- Identifies an area that restricts certain activities to protect public safety.
- Provides Alliance employees and contractors access to the pipeline for inspections, maintenance, testing or in an emergency.

The ROW can exist in many kinds of ecosystems, from river crossings and cultivated fields to urban areas. Because of this, there is no distinct look to the ROW.

Pipeline markers are signs that indicate that a pipeline is in the area. While there are permanent pipeline markers at railways, roads and other intervals along the ROW, these show only the approximate location of pipelines. The depth and location of pipelines vary across Alliance’s system. As such, only an Alliance representative can accurately determine the location and depth of our pipeline in a specific area.

That’s why it’s important to always call your local One-Call centre in advance of any planned ground disturbance activity. If underground utilities do exist, they will be located and identified using temporary colour-coded markings.

Canada Energy Regulator requirements

Under the Canadian Energy Regulator Act (CER Act), the responsibility to prevent pipeline damage is shared between anyone who plans to conduct an activity near a pipeline and the pipeline company.

Activities near Alliance’s pipeline may need authorization as outlined in the *National Energy Board Damage Prevention Regulations— Authorizations and Damage Prevention Regulations— Obligations of Pipeline Companies* (together, the DPRs). The DPRs are applicable to any person or company planning or undertaking an activity near a CER-regulated pipeline.

Ground disturbance activities

A ground disturbance is any work, operation or activity that results in the disturbance of the earth. If you plan to carry out ground disturbance activities within the prescribed area, you must consult with and receive consent from Alliance before moving ahead.

Activities causing ground disturbance can include, but are not limited to, the following:

- Excavating, digging, trenching or ditching.
- Installing a facility on, along, under or across the pipeline.
- Tunneling, boring or blasting.
- Topsoil stripping or land leveling.
- Tree planting, pounding posts or building a fence.
- Removing peat or quarrying.
- Plowing, drilling or backfilling.
- Clearing or grading.
- Vacuum excavating.

Constructing a facility or conducting a ground disturbance activity

Under the DPRs, if you are planning to construct a facility or cause ground disturbance across, on, along or under a pipeline, or if you will be conducting any ground disturbance activities within the prescribed area, you must:

- 1 Contact the pipeline company to obtain written consent to conduct these activities.
- 2 If written consent is given, you must make a locate request to determine the location of the pipeline.

The locate request must be made at least three working days before the day on which the construction or planned ground disturbance activity is to start. To make the request visit **ClickBeforeYouDig.com** or call your local One-Call centre (numbers provided at the back of this brochure).

Construction and ground disturbance activity must not proceed until locating and marking of the pipeline and any possible mitigating factors have been addressed.

Mobile equipment and vehicle crossings

Federal regulations also require that any persons wanting to operate vehicles or mobile equipment across a pipeline (outside the travelled portion of a highway or public road), must first receive written consent from the pipeline company.

If you need to cross the Alliance system, we must first be notified to assess if the vehicle, machinery or mobile equipment is safe to cross our assets. We will assess the request and if approved, provide written consent including mitigation measures.

Please review the DPRs for more information, and to make sure the regulations are understood prior to planning work in proximity to a CER-regulated pipeline. The address can be found at the back of this brochure.

Mobile equipment and vehicle crossings, must not proceed until the locating and marking of the pipeline, and any possible mitigating factors have been addressed.

Unauthorized Activity and Administrative Monetary Penalties (AMPs)

Certain contraventions of the CER Act and its associated regulations, such as the DPRs, must be reported by the pipeline company to the CER. Such contraventions can result in the CER imposing financial penalties called Administrative Monetary Penalties (AMPs) on companies or individuals when enforcement tools such as letters, orders or voluntary commitments are not working to prevent unauthorized activity within the prescribed area. The CER Act sets the maximum daily fines of up to \$25,000 for individuals and \$100,000 for companies per violation.

More information about the DPRs and AMPs can be found on the CER website at **cer-rec.gc.ca**.

Safety checklist

If you are planning to conduct work in the prescribed area, please follow these steps.

- 1 Plan your activity.** Identify the location of your work, making sure to look for pipeline marker posts, warning signs or other buried facilities.
- 2 Contact Alliance to obtain written consent.** Contact us to obtain our guidelines for constructing a facility, conducting a ground disturbance activity or vehicle crossing near the pipeline. Remember, written consent is required for the construction of facilities across, on, along or under a pipeline; conducting ground disturbance activities within the prescribed area, and crossing a pipeline with a vehicle or mobile equipment across the ROW (where no highway or public road exists).
- 3 Make a locate request.** At least three working days before the planned activity is to start, contact clickbeforeyoudig.com or call your local One-Call centre.
- 4 Be on site** when underground facilities are being located to be sure you understand the meaning of the markings.
- 5 Review CER requirements.** Confirm that any persons or companies hired to do work on your behalf, such as contractors, are aware of the necessary obligations.
- 6 Follow all instructions provided** in the authorization, including hand exposing or vacuum excavating the pipe before mechanical excavations within five meters of the pipe and notifying Alliance prior to backfilling. An Alliance representative must be on site during backfill.
- 7 Immediately notify Alliance if you come into contact with the pipe or its coating. Immediately call our 24-hour emergency line at 1-800-884-8811.**

Step #1: Plan your activity

Ground disturbance within 30m of the centreline of Alliance Pipeline

If you are planning an excavation within the 30 metre (100 foot) prescribed area or the ROW, you must notify and receive written permission from Alliance Pipeline before commencing work.

Explosives

If the work involves explosives, written permission must be obtained to blast within 40 metres, and a detailed blasting plan must be filed with Alliance as part of the application process. Mining activities within 40 metres of a pipeline ROW require consent from the CER.

Drainage improvements

Any excavation near the pipeline ROW must be supervised by an Alliance representative. Consulting with us as early as possible regarding your drainage proposal, including installing drain tiles, ditching, grading or deep tilling, will allow us to assess your work and set safe work procedures when working within the pipeline ROW or within the 30 metre (100 foot) prescribed area.

For installations across the ROW, written permission is required. A crossing application with tile design layout must be sent to Alliance early for our review and assessment. If approved, we will provide the necessary consent.

To request consent, submit a written request by completing the application form via enbridge.com/crossingapplicationguidelines.

Ground disturbance activities within the prescribed area must not proceed until the locating and marking of the pipeline, and any possible mitigating factors have been addressed. Among other requirements, the person must also have written consent from Alliance to conduct the activity.

Step #2: Written permission

You must receive written permission prior to doing any work within Alliance's right-of-way. Ensure that scope of work, appropriate plans, schedule and equipment lists are provided to Alliance in a timely manner for our review and assessment and preparation of written consent.

If your scope of work changes, you must inform Alliance. This includes, but is not limited to: changes to scope of work, location, schedule, method of installation, and equipment to be used. We will work with you to issue a revised consent.

Be sure to follow the specific instructions provided by Alliance as part of the consent to conduct activities.

Step #3: Call or Click Before You Dig

We know that sometimes work needs to be done on or near the pipeline. That's why we are a member of Call or Click Before You Dig, a quick, **free** and easy communication service that notifies member companies of proposed activities so that underground infrastructure can be safely marked with flags, stakes or paint before work begins.

The locate request must be made at least three working days before the day on which the activity is to start. To make the request visit ClickBeforeYouDig.com or call your local One-Call centre (numbers are on the side panel of this brochure).

The One-Call centre will then inform an Alliance representative who will come to your job site ready to mark the location of the pipeline.

**Click
Before
You Dig.com**

Know the code

Colour codes are extremely important. While not all facility owners have adopted the same coding system, it remains very important that you confirm colour markings when you see them.

APWA (American Public Works Association) Uniform Color Code

	White – Proposed Excavation
	Pink – Temporary Survey Markings
	Red – Electric Power Lines, Cables, Conduit and Lighting Cables
	Yellow – Gas, Oil, Petroleum or Gaseous Materials
	Orange – Communication, Alarm or Signal Lines
	Blue – Potable Water
	Purple – Reclaimed Water, Irrigation and Slurry Lines
	Green – Sewer and Drain Lines



Step #4: Be on site

Within three working days of placing your One-Call request, an Alliance representative will be on-site to locate our facilities, free of charge. It's important that you are also on-site when these locates are being done.

By being on-site when Alliance facilities are being located you can ask questions about the markings, answer questions we may have for you, and plan for any additional measures that may be needed.

For example, you may be required to:

- Hold a pre-job meeting with Alliance to inform construction crews of safe work procedures over or near the pipeline.
- Erect temporary fencing to shield the pipeline from heavy equipment and be sure that machines follow designated routes.
- Build ramps to specifications provided in Alliance's written consent for temporary equipment crossings in order to cross safely over Alliance's pipeline. An Alliance representative must oversee ramp construction.

Step #5: Review CER requirements

All persons working on your behalf, including employees, contractors and subcontractors, must be made aware of their obligations before any work starts. Be sure to keep documents with safety requirements and guidance on site.

Step #6: Follow all instructions

Once the location of the pipeline has been marked, you may be required to positively identify the pipe by either hand exposure or vacuum excavating. The positive identification zone for pipelines is three metres and an Alliance representative must be present at the time of positive identification.

Once the pipeline has been positively identified, no machinery can be used to dig within five metres of the pipeline, or any distance underneath the pipeline without the direct supervision of an Alliance representative.

When you are ready to backfill over or under our exposed pipeline, please call Alliance at least one full working day before you cover the exposed pipeline. An Alliance representative must be on site during backfill. All work must be done in accordance with the specifications listed in Alliance's written permission.

Step #7: In case of an emergency

Any contact with the pipe or its coating must be reported. Immediately notify Alliance at **1-800-884-8811** if you come into contact with the pipe or its coating.

It is important that you know the warning signs and how to respond in the event of an emergency. Please refer to the *Emergency Information* section of this guide to read about what to do in the event of an emergency.

How errors happen

Don't assume anything.

Call or Click Before You Dig

At any pipeline location, appearances can be deceiving.

- Never assume the location of a pipeline. Wait until the Alliance representative is on site and the pipe is located and exposed so you know the correct alignment before excavating.
- Never assume only one pipe exists in an area. There may be other facilities within your work area. That's why calling or clicking before you dig is so important, as it allows the One-Call service centre to notify other member companies who might have underground utilities in the area.
- Check for underground utility marker signs. Under no circumstances does the absence of marker signs indicate an absence of underground facilities. Signs, in some instances, may be missing, stolen or vandalized. Should you become aware that any Alliance signs are damaged or missing, please contact us.
- Remember that pipelines exist in urban as well as rural areas. When contacting utilities to locate and mark their services on a city construction site, please also contact Alliance.

Always remember to dig with CARE

C all or **Click Before You Dig.**

A llow **required time for markings.**

Provide adequate notice prior to starting your excavation. This provides time for companies to accurately locate and mark their facilities in your dig area.

R espect **the marks.**

Before you begin your excavation, walk through the site to familiarize yourself with the markings and the location of buried facilities. Confirm that all companies have responded to you indicating they have marked your dig area.

E xcavate **carefully.**

It is important that you take a proactive approach to safety not only for yourself, but also for your community by initiating the one-call process and excavating with CARE.

Protecting the people, communities and environment near our operations is the most important part of our job.

In an emergency

Pipelines have been proven to be the safest transportation mode for energy commodities.

While rare, pipeline leaks can happen for a number of different reasons. Studies have shown that third-party damage is one of the most common reasons for pipeline leaks or ruptures, which underscores the importance of Call or Click Before You Dig programs.

Internal inspection tools are used to detect potential problems with the pipeline which enables Alliance to perform investigative digs and repair any anomalies. Since some commodities are more flammable than others, a pipeline leak or rupture will have different consequences depending on the commodity being transported.

Hydrocarbon products such as natural gas and natural gas liquids are very flammable, and can catch fire from even the smallest spark or ignition source. The products in Alliance's system are flammable, and are potentially hazardous and explosive under certain conditions.

Given our thorough maintenance, testing, training, monitoring and safety programs, a pipeline leak is unlikely; however, if one were to occur, it's important that you know the warning signs and how to respond in the event of an emergency or if you suspect pipeline operations have been disrupted in any way.

Know the warning signs

Natural gas is lighter than air, so if there were a release along our pipeline, most of the product would dissipate into the atmosphere. Even so, you should avoid contact with any product released from a pipeline.

Natural gas poses some health hazards and could cause dizziness, shortness of breath and loss of consciousness if inhaled. It is flammable, so be sure to eliminate any potential sources of ignition if you suspect a natural gas leak.



You might see:

- A steam-like cloud.
- Unexpected frost build up on the ground.
- Dirt or dust being blown from the ground or appearing to be thrown into the air.
- Bubbling in wet areas or blowing into the air at a pond, creek or river.
- Dead or dying vegetation on or near a pipeline in an otherwise green area.



You might hear:

- An unusual roaring, blowing or hissing or loud whistling sound.



You might smell:

- No odour or a smell similar to diesel, oil or propane.

Unlike the natural gas delivered to your home which may be odourized, the natural gas in Alliance's pipeline is not odourized. While you may notice a slight smell, similar to diesel fuel, oil or propane, you will not smell the common rotten egg odour associated with natural gas.

About Alliance Pipeline



Alliance transports liquids-rich natural gas through a 3,848 kilometre underground system from northeastern British Columbia and northwestern Alberta—running through Saskatchewan, North Dakota, Minnesota, Iowa, and ending in Illinois. The Canadian portion of the pipeline consists of approximately 2,292 kilometres of infrastructure.

Delivering an average of 1.6 billion cubic feet of natural gas every day, safety is at the core of everything we do, but we know we can't do it alone.

For us, preparedness means developing integrated response plans based on open communication and teamwork. We work year-round with local fire and police services so that they have the information they require to respond to an emergency, and we regularly communicate important information to local governments, community fire and police services, utilities, residents, business owners, neighbours, tenants, community leaders and contractor companies, like you.

Steps for a safe response



What to do in an emergency

- 1 If you can do so safely, turn off any ignition sources. Move as far away from the leak as possible in an upwind direction, avoiding contact with escaping liquids and gases.
- 2 **Call 911.**
- 3 Call the toll-free, 24-hour Alliance emergency number:
1-800-884-8811.
- 4 If safe to do so, warn others to stay away.

What NOT to do in an emergency

- Do not touch or go near the leaking gas, liquid or vapour that may have come from the pipeline.
- Do not attempt to extinguish a natural gas fire.
- **Do not attempt to operate pipeline valves.**
- Do not start your vehicle or any other piece of equipment that can act as a possible ignition source.
- Do not light a match or smoke, and avoid heat sources or making sparks that could ignite the leaking gas as you are leaving the area.
- Do not turn on or off anything that may create a spark—including cell phones, telephones, light switches, vehicle alarms, vehicle keyless entry and flashlights—until you are in a safe location.

How to reach us

We appreciate your calls, any time of the year, any time of day. This page contains important phone numbers you can use to contact an Alliance representative with any comments or questions.

In case of an emergency, please find a safe place to **call 911** and then call the toll-free 24-hour Alliance emergency number:

1-800-884-8811

For questions regarding Alliance's general operations or if you need to plan construction, fencing, digging or explosives use, please visit:

British Columbia, Alberta & Saskatchewan
crossings@alliancepipeline.com

More information can also be found at:
alliancepipeline.com

Call or Click Before You Dig

Any person who intends to construct a facility across, on, along or under a pipeline, operate a motorized vehicle or engage in activity that would cause a ground disturbance within the prescribed area, must make a locate request at least three working days before the day on which the construction or activity is to start.

Please visit **ClickBeforeYouDig.com** or contact your local one-call centre:

- BC 1 Call **1-800-474-6886**
- Alberta One-Call **1-800-242-3447**
- Sask 1st Call **1-866-828-4888**

**Click
Before
You Dig
.com**

Links for more information

Canadian Energy Regulator
cer-rec.gc.ca

Canadian Common Ground Alliance
canadiongca.com

Alberta Common Ground Alliance
albertacga.ca

BC Common Ground Alliance
commongroundbc.ca

Saskatchewan Common Ground Alliance
scga.ca