

ALGONQUIN GAS TRANSMISSION LLC  
CAPE COD CANAL PIPELINE RELOCATION  
PROJECT  
**Figure 1.3-1. Project  
Location Map**

- M&R Station to be Relocated
- Proposed M&R Station
- Existing Algonquin Gas Transmission Pipeline
- Pipeline Replacement
- Pipeline Relocation
- Pipeline Removal/Abandonment

- Proposed Access Road
- Proposed Ware Yard

Bourne, MA  
USGS 7.5' Quadrangles:  
Sagamore and Pocasset  
NAD 1983 StatePlane  
Massachusetts Mainland FIPS  
2001 Feet  
41.759°N 70.5665°W

0 1,000 2,000  
0 250 500  
Feet  
Meters

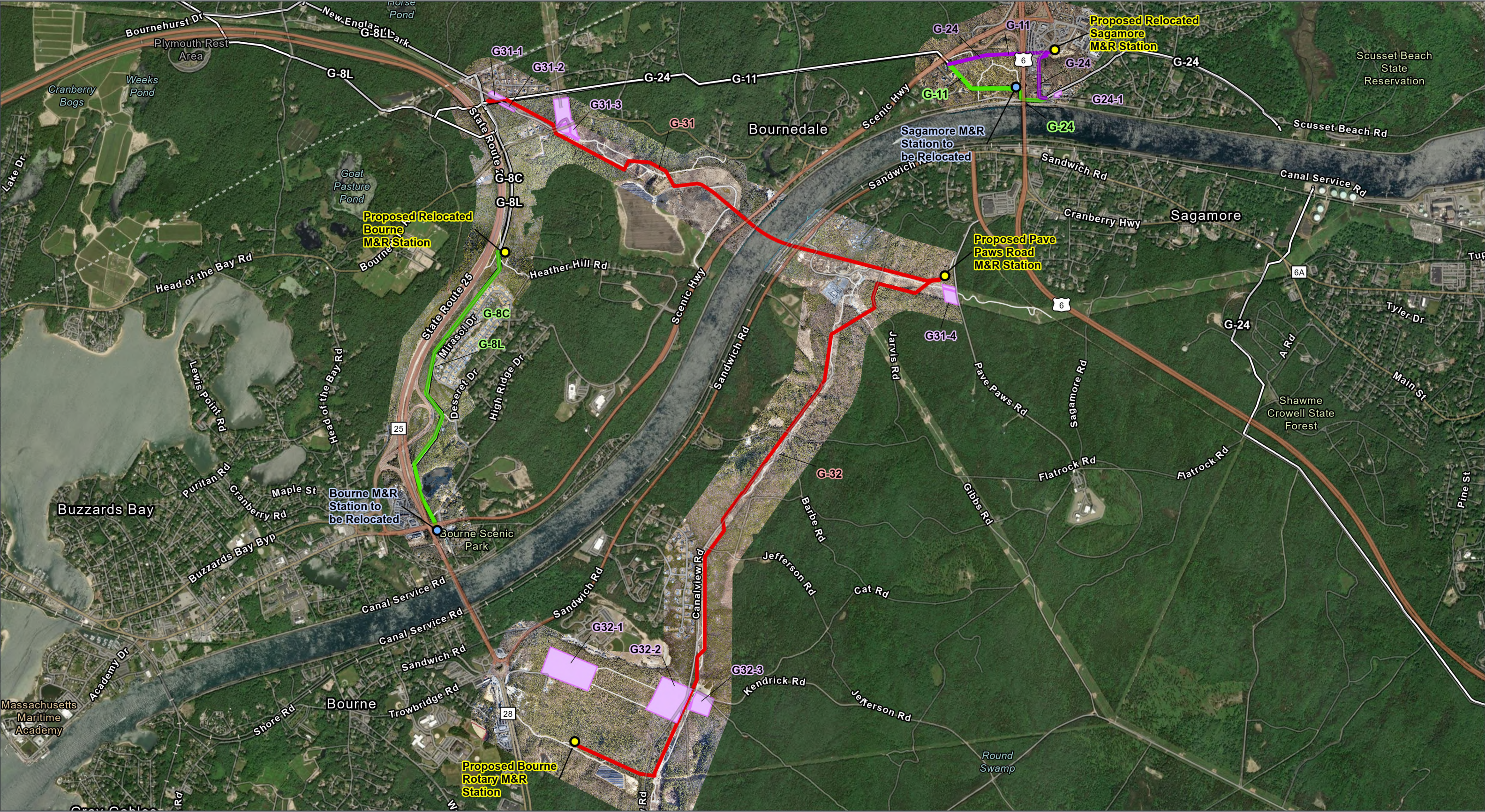
N

1:24,000

Base Map: Esri ArcGIS Online,  
accessed August 2025  
Updated: 65956  
Layout: Figure 1.3-1  
Aprx: 65956\_CCRP\_RR1

**SWCA**  
ENVIRONMENTAL CONSULTANTS





ALGONQUIN GAS TRANSMISSION LLC  
CAPE COD CANAL PIPELINE RELOCATION  
PROJECT  
**Figure 1.3-2. Aerial  
Overview Map**

- M&R Station to be Relocated
- Proposed M&R Station
- Existing Algonquin Gas Transmission Pipeline
- Pipeline Replacement
- Pipeline Relocation
- Pipeline Removal/Abandonment
- Proposed Access Road
- Proposed Ware Yard

Bourne, MA  
USGS 7.5' Quadrangles:  
Sagamore and Pocasset  
NAD 1983 StatePlane  
Massachusetts Mainland FIPS  
2001 Feet  
41.759°N 70.5665°W

0 1,000 2,000  
0 250 500  
Feet  
Meters

N

1:24,000

Base Map: Esri ArcGIS Online,  
accessed August 2025  
Updated: 65956  
Layout: Figure 1.3-2  
Aprx: 65956\_CCRP\_RR1

**SWCA**  
ENVIRONMENTAL CONSULTANTS