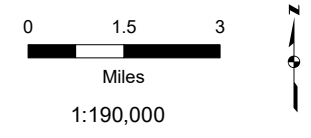
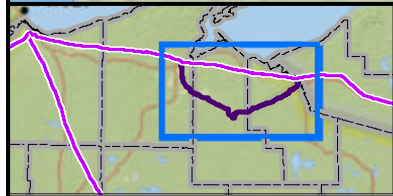


This information is for environmental review purposes only.

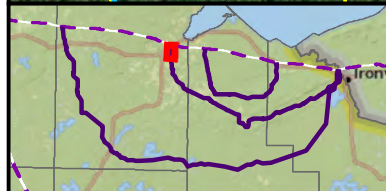
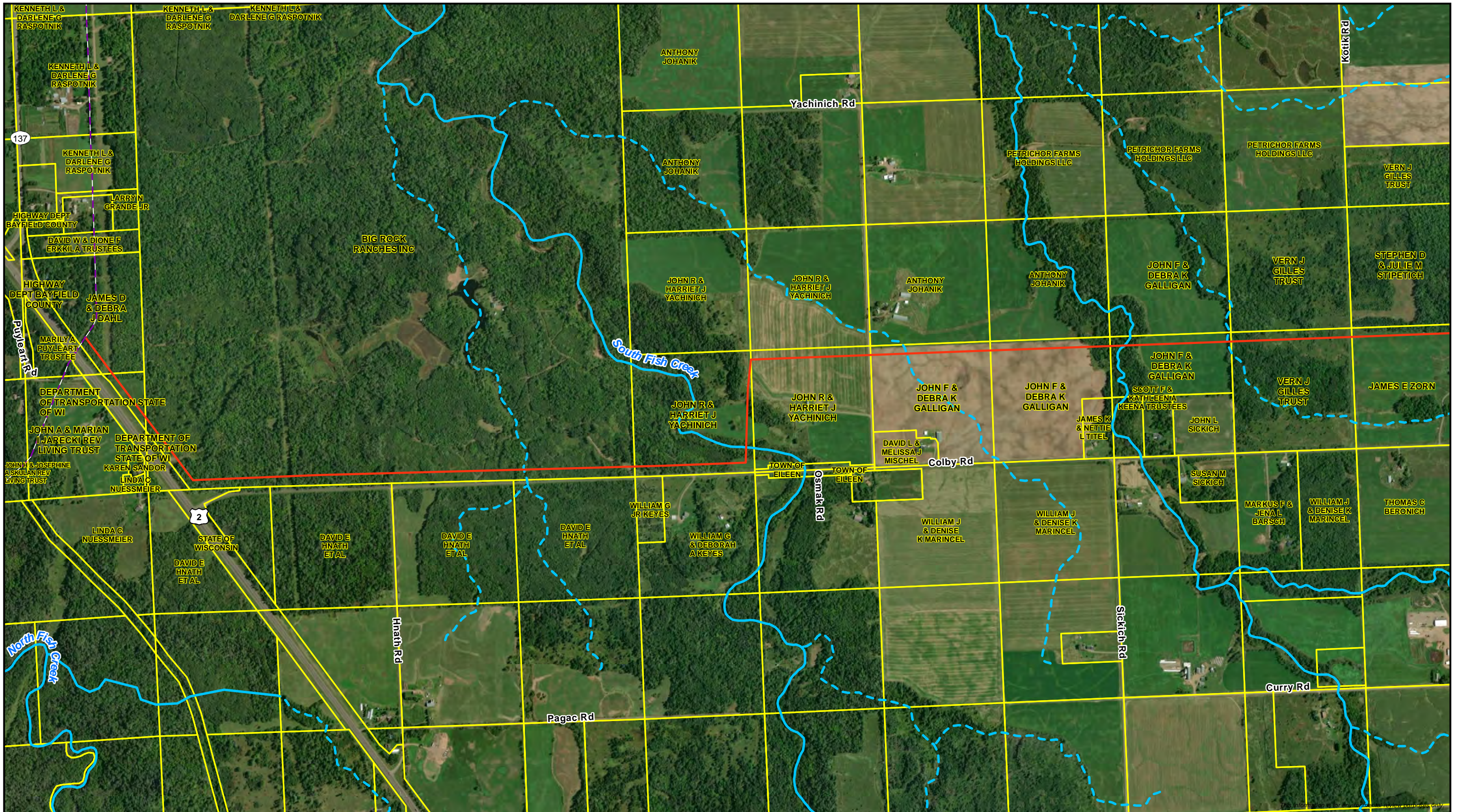


- RA-02
- Existing Enbridge Pipeline
- County Boundary
- Page Extent

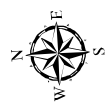


Data Request 24
Route Alternative RA-02 Index
Line 5 Wisconsin Segment Relocation Project
 Enbridge Energy, L.P.





0 250 500
Feet
1:12,000



- Route Alternative
- Existing Enbridge Pipeline
- Parcel Boundary
- Wisconsin DNR 24K Hydro Perennial Stream/River
- Intermittent Stream

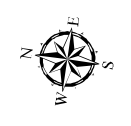
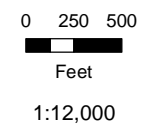
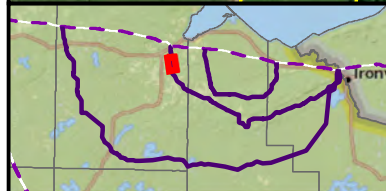


Data Request 24
Route Alternative RA-02 Parcels
 Line 5 Wisconsin Segment Relocation Project
 Enbridge Energy, L.P.





This information is for environmental review purposes only.



- Route Alternative Wisconsin DNR 24K Hydro
- Parcel Boundary
- Perennial Stream/River
- Intermittent Stream



Data Request 24
Route Alternative RA-02 Parcels
Line 5 Wisconsin Segment Relocation Project
 Enbridge Energy, L.P.





0 250 500
Feet
1:12,000

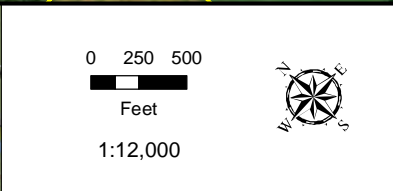
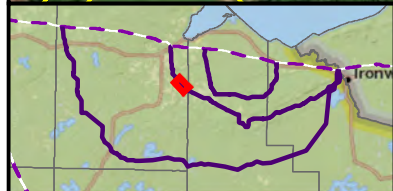
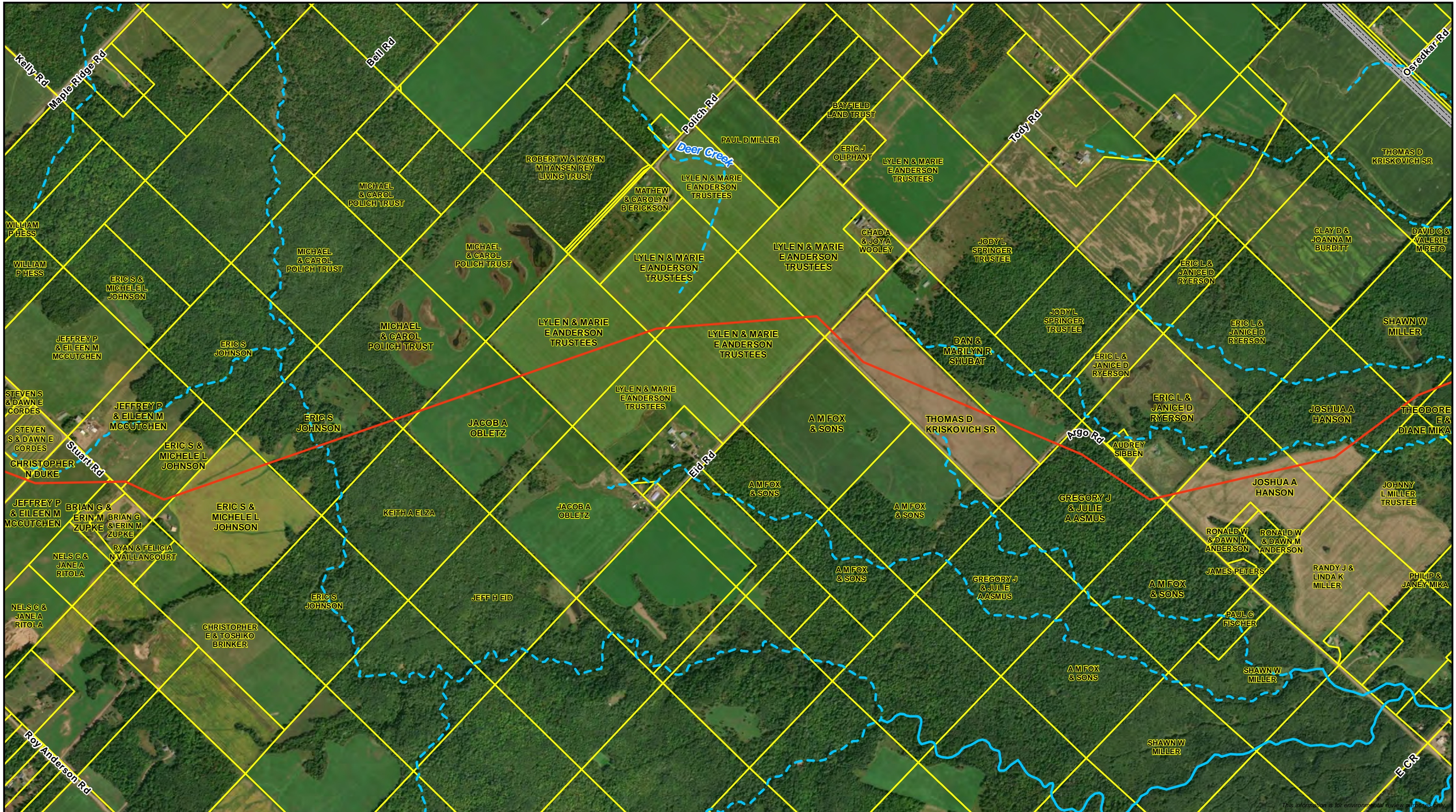


- Route Alternative Wisconsin DNR 24K Hydro
- Parcel Boundary
- Perennial Stream/River
- Intermittent Stream



Data Request 24
Route Alternative RA-02 Parcels
 Line 5 Wisconsin Segment Relocation Project
 Enbridge Energy, L.P.

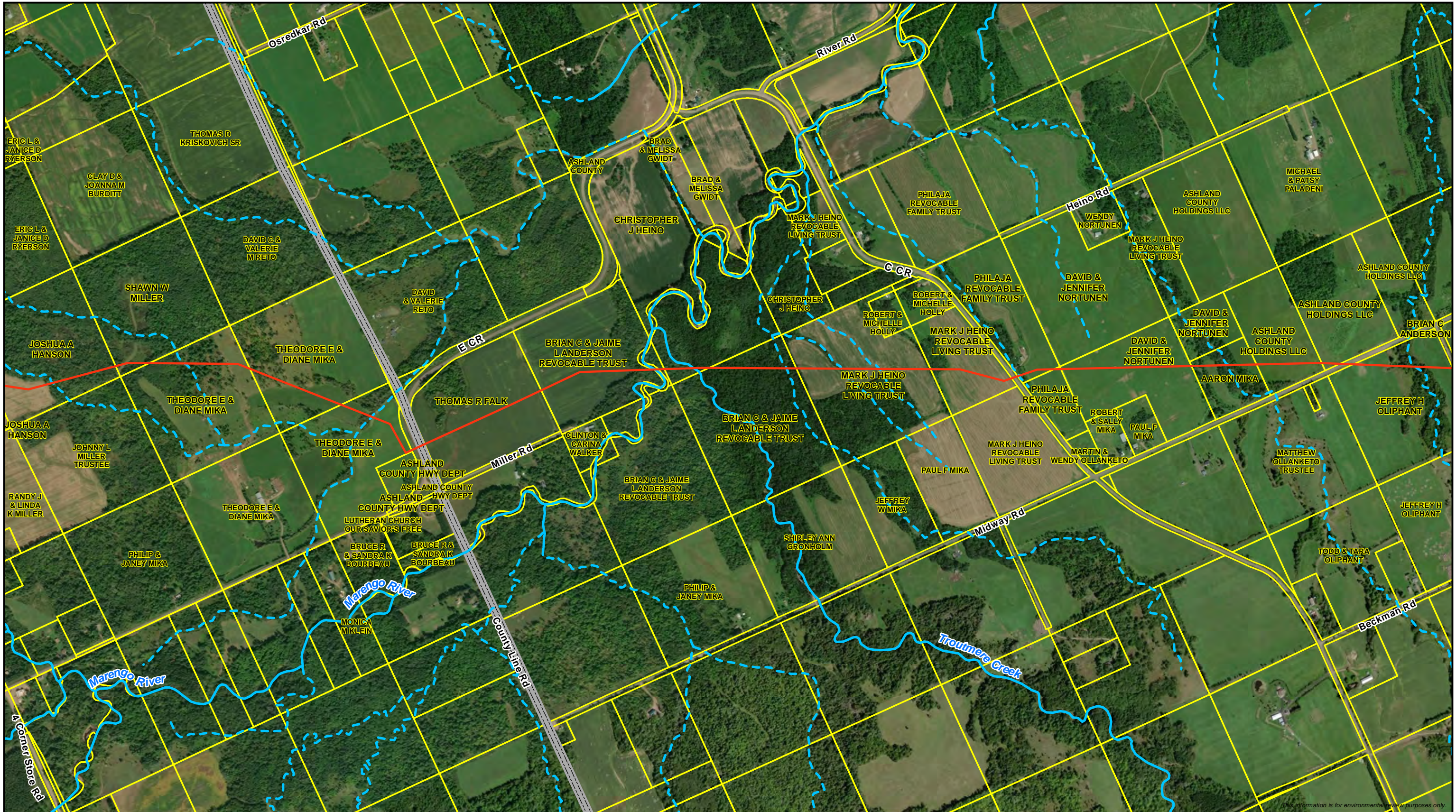




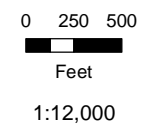
- Route Alternative Wisconsin DNR 24K Hydro
- Parcel Boundary
- Perennial Stream/River
- Intermittent Stream

Data Request 24
Route Alternative RA-02 Parcels
Line 5 Wisconsin Segment Relocation Project
 Enbridge Energy, L.P.

Page 4 of 20



This information is for environmental review purposes only.

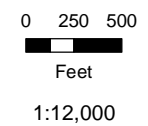


- Route Alternative Wisconsin DNR 24K Hydro
- Parcel Boundary
- Perennial Stream/River
- Intermittent Stream



Data Request 24
Route Alternative RA-02 Parcels
 Line 5 Wisconsin Segment Relocation Project
 Enbridge Energy, L.P.





- Route Alternative Wisconsin DNR 24K Hydro
- Parcel Boundary
- - - Perennial Stream/River
- - - Intermittent Stream



Data Request 24
Route Alternative RA-02 Parcels
 Line 5 Wisconsin Segment Relocation Project
 Enbridge Energy, L.P.

