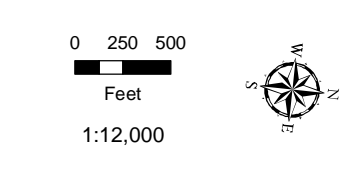
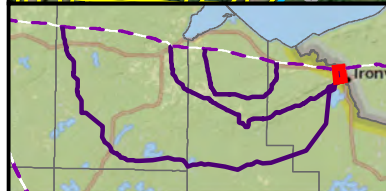


This information is for environmental review purposes only.

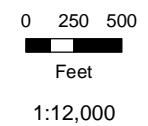
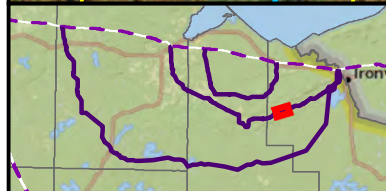
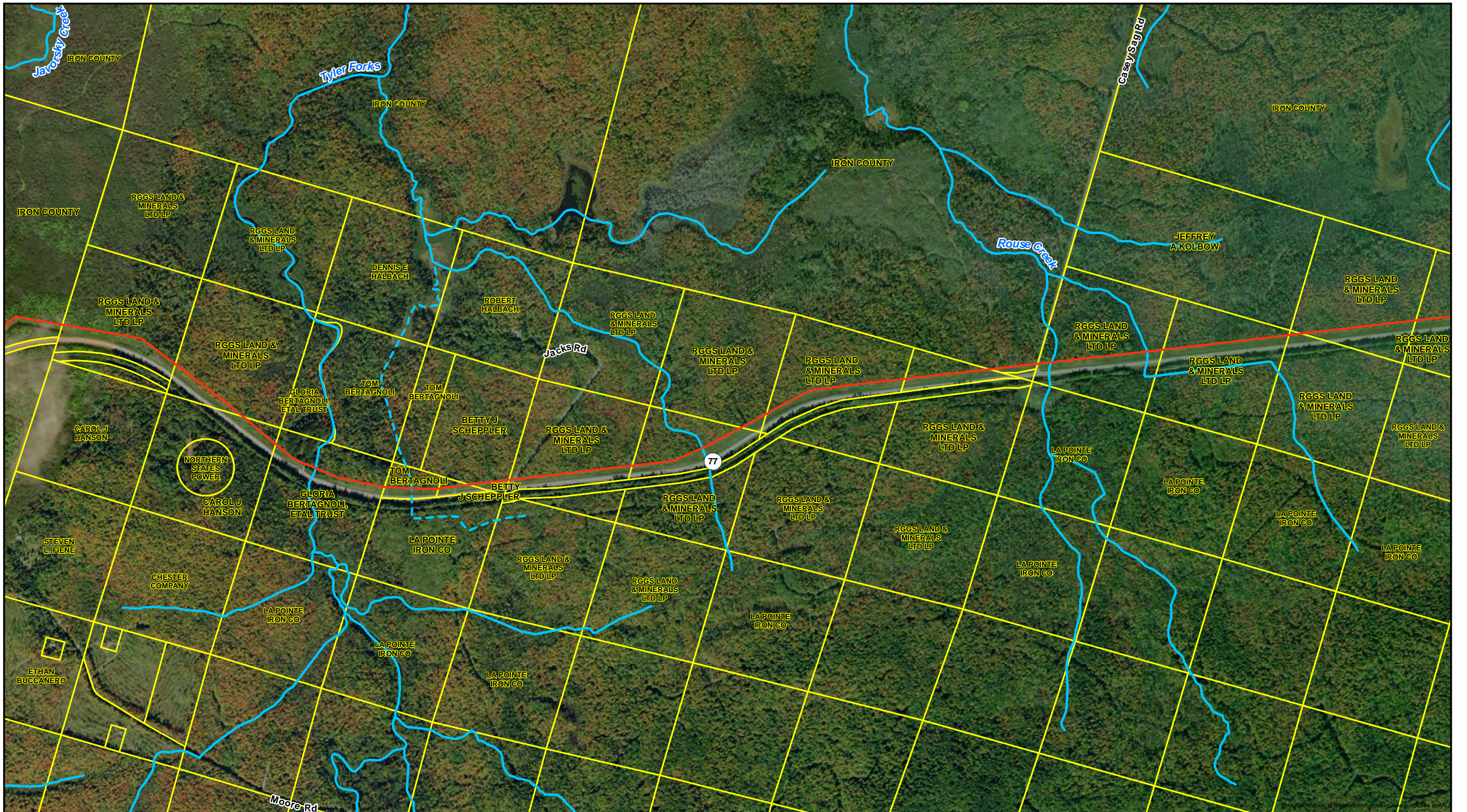


- Route Alternative
- Existing Enbridge Pipeline
- Parcel Boundary
- Wisconsin DNR 24K Hydro Perennial Stream/River
- Intermittent Stream



**Data Request 24**  
**Route Alternative RA-02 Parcels**  
**Line 5 Wisconsin Segment Relocation Project**  
 Enbridge Energy, L.P.



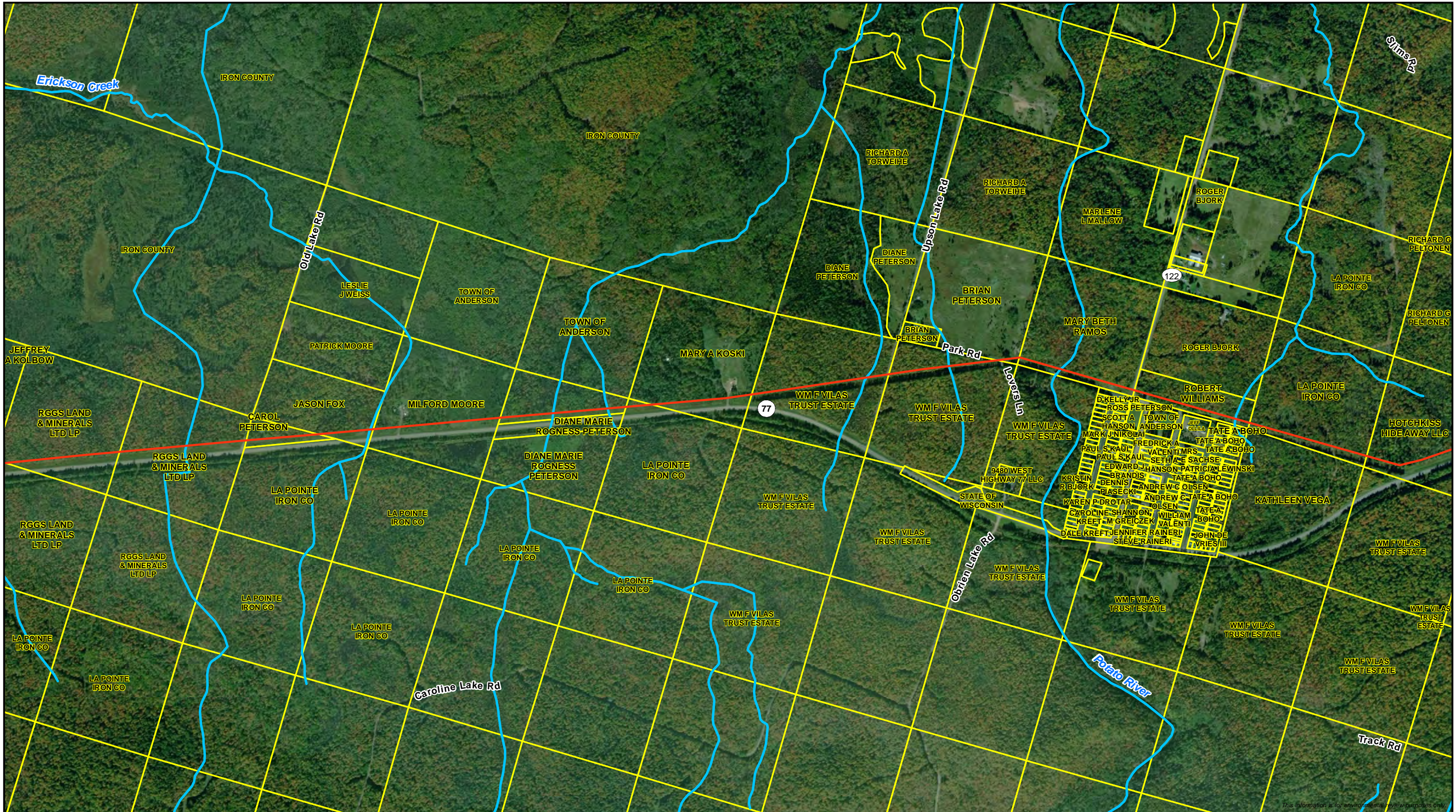


- Route Alternative Wisconsin DNR 24K Hydro
- Parcel Boundary
- Perennial Stream/River
- Intermittent Stream

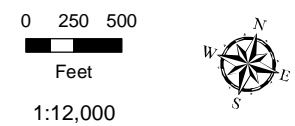
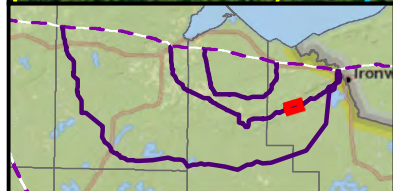


**Data Request 24**  
**Route Alternative RA-02 Parcels**  
 Line 5 Wisconsin Segment Relocation Project  
 Enbridge Energy, L.P.





This information is for environmental review purposes only.

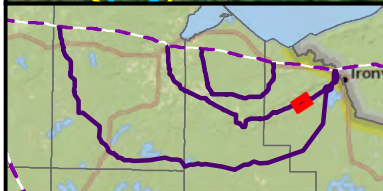
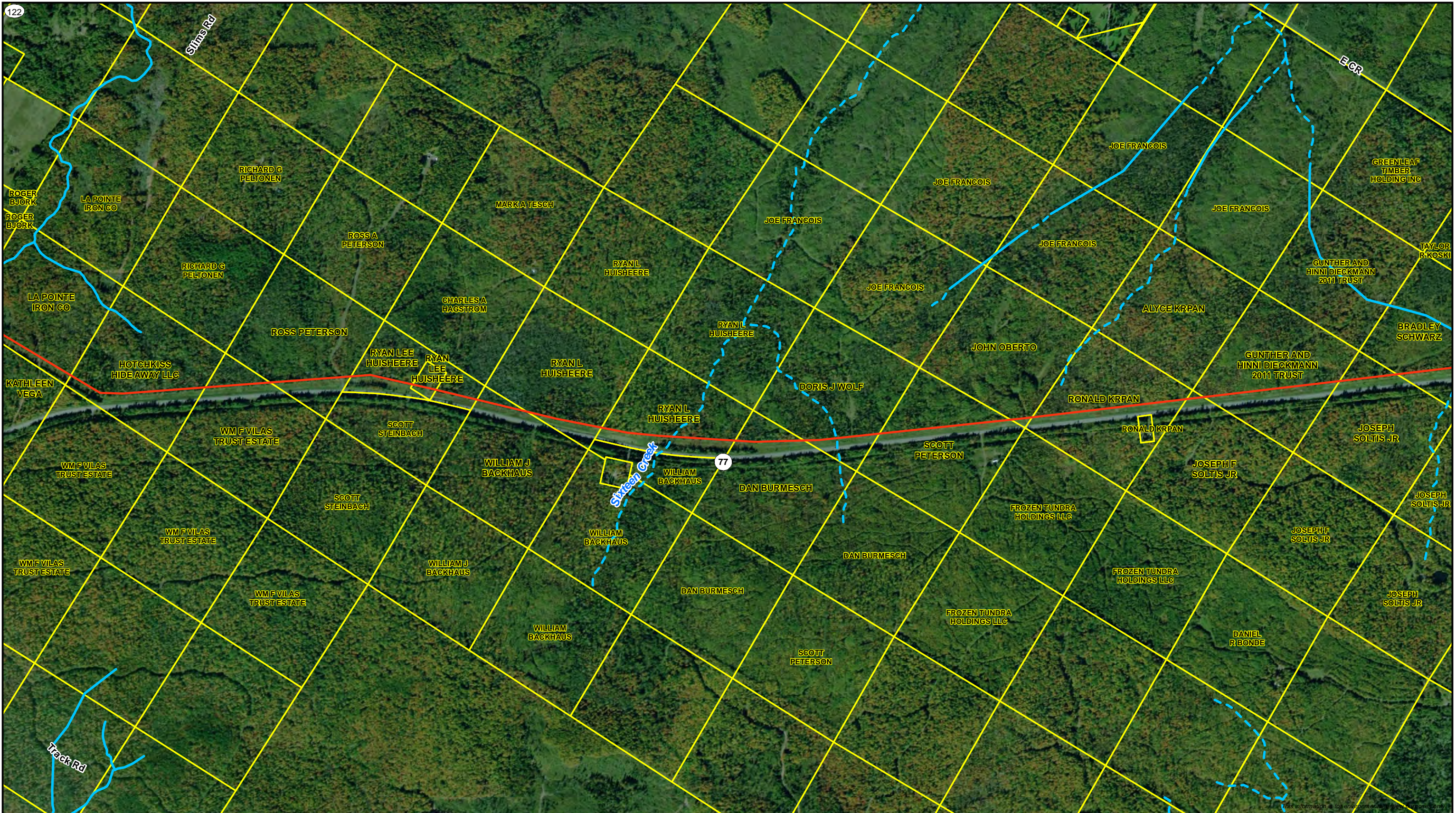


- Route Alternative Wisconsin DNR 24K Hydro
- Parcel Boundary
- Perennial Stream/River
- Intermittent Stream



**Data Request 24**  
**Route Alternative RA-02 Parcels**  
 Line 5 Wisconsin Segment Relocation Project  
 Enbridge Energy, L.P.





0 250 500  
Feet  
1:12,000

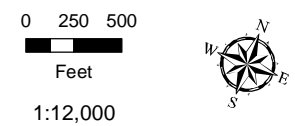
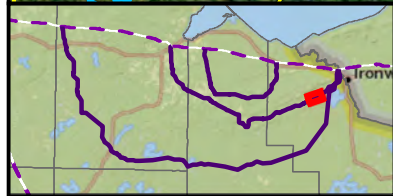


- Route Alternative Wisconsin DNR 24K Hydro
- Parcel Boundary
- Perennial Stream/River
- Intermittent Stream



**Data Request 24**  
**Route Alternative RA-02 Parcels**  
**Line 5 Wisconsin Segment Relocation Project**  
 Enbridge Energy, L.P.





- Route Alternative Wisconsin DNR 24K Hydro
- Parcel Boundary
- Perennial Stream/River
- Intermittent Stream



**Data Request 24**  
**Route Alternative RA-02 Parcels**  
 Line 5 Wisconsin Segment Relocation Project  
 Enbridge Energy, L.P.

