

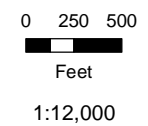
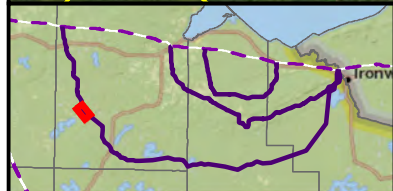
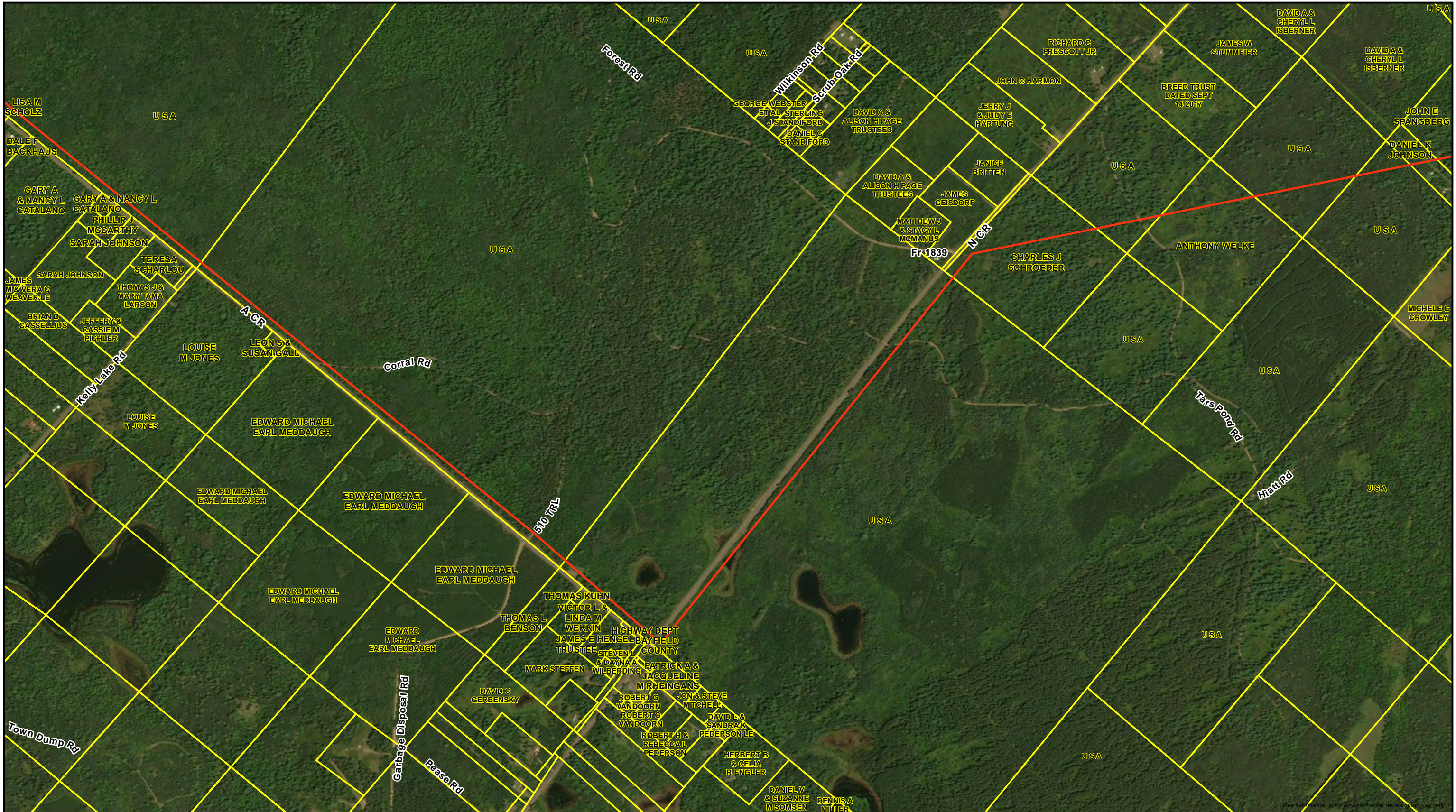
- Route Alternative Wisconsin DNR 24K Hydro
- Parcel Boundary
- Perennial Stream/River
- Intermittent Stream



**Data Request 24**  
**Route Alternative RA-03 Parcels**  
**Line 5 Wisconsin Segment Relocation Project**  
 Enbridge Energy, L.P.







- Route Alternative Wisconsin DNR 24K Hydro
- Parcel Boundary
- Perennial Stream/River
- Intermittent Stream



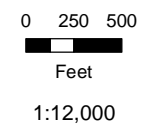
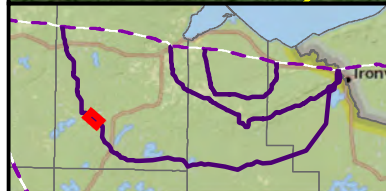
**Data Request 24**  
**Route Alternative RA-03 Parcels**  
**Line 5 Wisconsin Segment Relocation Project**  
 Enbridge Energy, L.P.







This information is for environmental review purposes only.



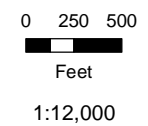
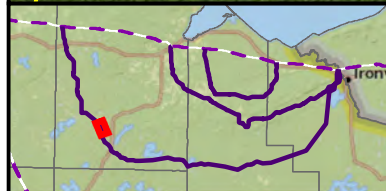
- Route Alternative Wisconsin DNR 24K Hydro
- Parcel Boundary
- Perennial Stream/River
- Intermittent Stream



**Data Request 24**  
**Route Alternative RA-03 Parcels**  
**Line 5 Wisconsin Segment Relocation Project**  
 Enbridge Energy, L.P.







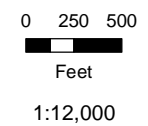
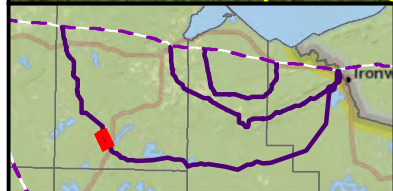
- Route Alternative Wisconsin DNR 24K Hydro
- Parcel Boundary
- Perennial Stream/River
- Intermittent Stream



**Data Request 24**  
**Route Alternative RA-03 Parcels**  
 Line 5 Wisconsin Segment Relocation Project  
 Enbridge Energy, L.P.







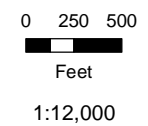
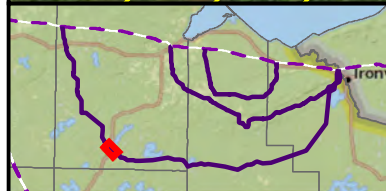
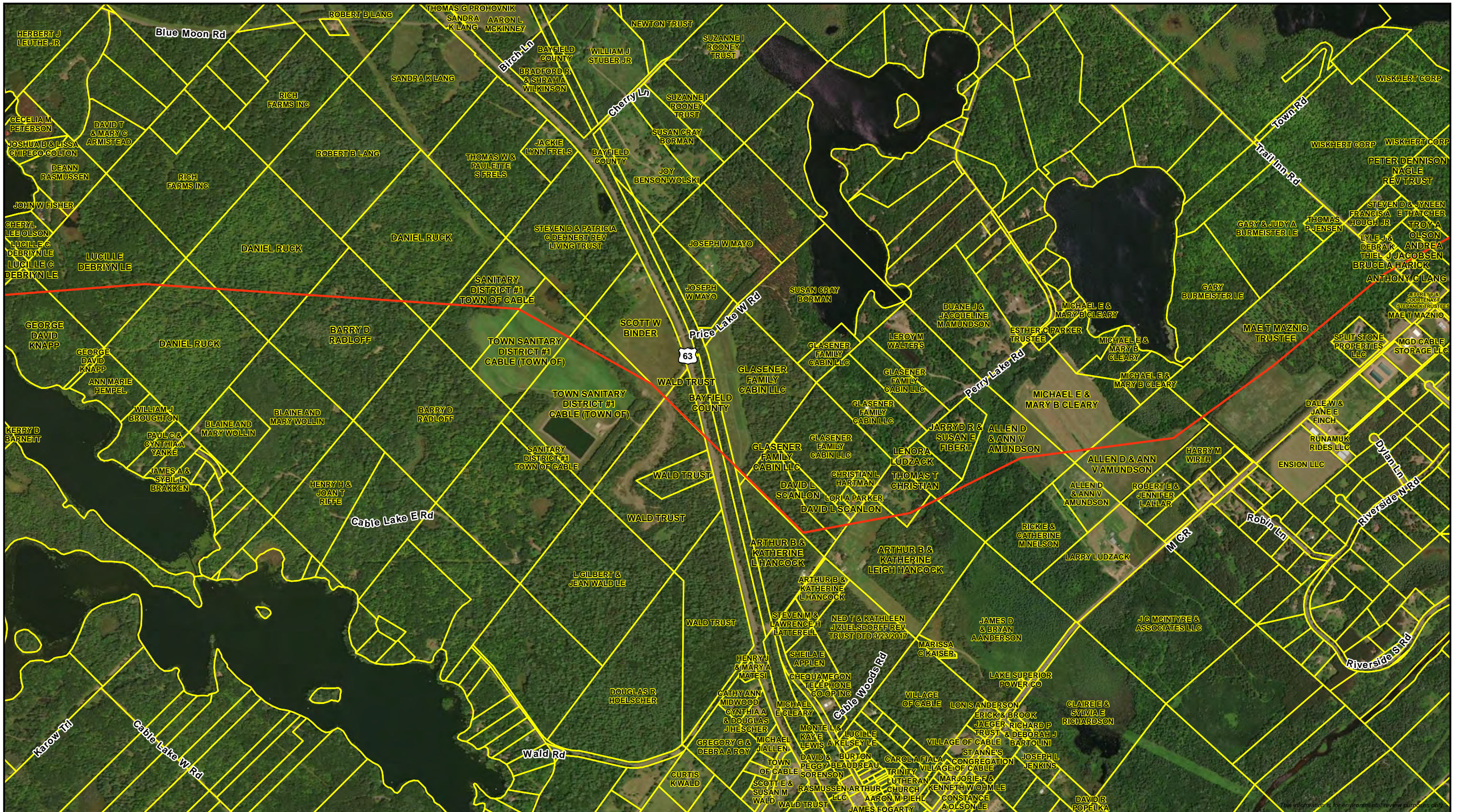
- Route Alternative Wisconsin DNR 24K Hydro
- Parcel Boundary
- Perennial Stream/River
- Intermittent Stream



**Data Request 24**  
**Route Alternative RA-03 Parcels**  
 Line 5 Wisconsin Segment Relocation Project  
 Enbridge Energy, L.P.







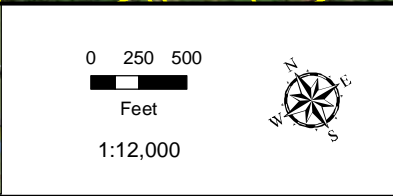
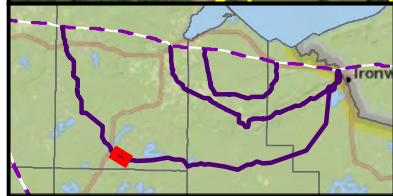
- Route Alternative Wisconsin DNR 24K Hydro
- Parcel Boundary
- Perennial Stream/River
- Intermittent Stream




**Data Request 24**  
**Route Alternative RA-03 Parcels**  
 Line 5 Wisconsin Segment Relocation Project  
 Enbridge Energy, L.P.







- Route Alternative Wisconsin DNR 24K Hydro
- Parcel Boundary
- Perennial Stream/River
- Intermittent Stream



**Data Request 24**  
**Route Alternative RA-03 Parcels**  
**Line 5 Wisconsin Segment Relocation Project**  
 Enbridge Energy, L.P.

Page 13 of 36

