

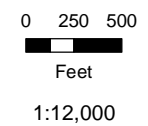
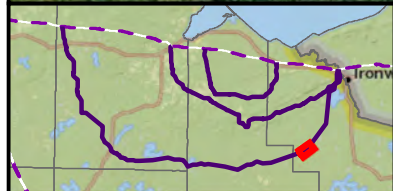
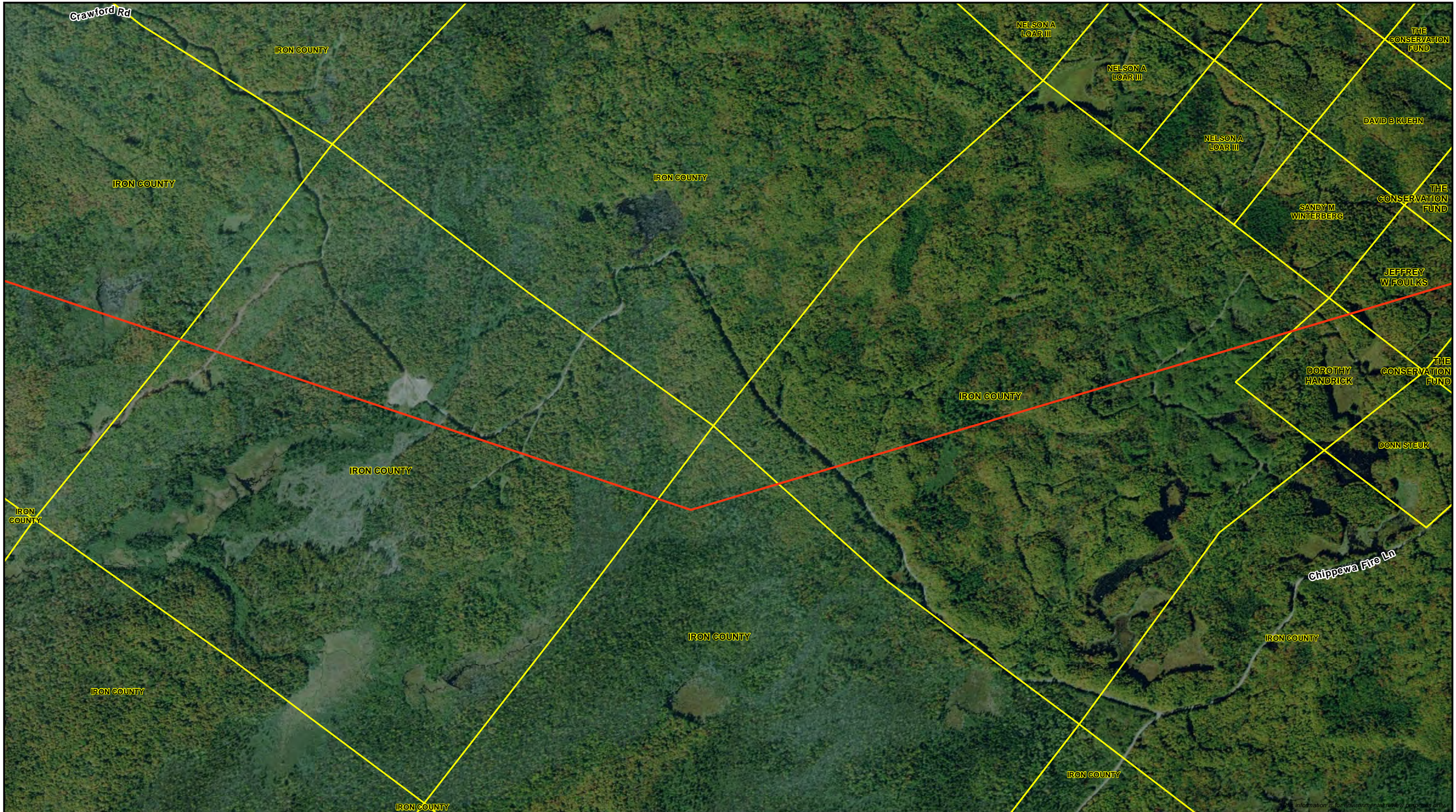
- Route Alternative Wisconsin DNR 24K Hydro
- Parcel Boundary
- Perennial Stream/River
- Intermittent Stream



**Data Request 24**  
**Route Alternative RA-03 Parcels**  
**Line 5 Wisconsin Segment Relocation Project**  
 Enbridge Energy, L.P.







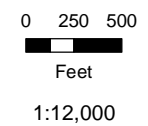
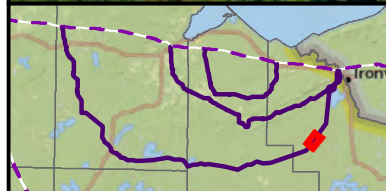
- Route Alternative Wisconsin DNR 24K Hydro
- Parcel Boundary
- Perennial Stream/River
- Intermittent Stream



**Data Request 24**  
**Route Alternative RA-03 Parcels**  
**Line 5 Wisconsin Segment Relocation Project**  
 Enbridge Energy, L.P.







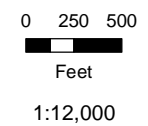
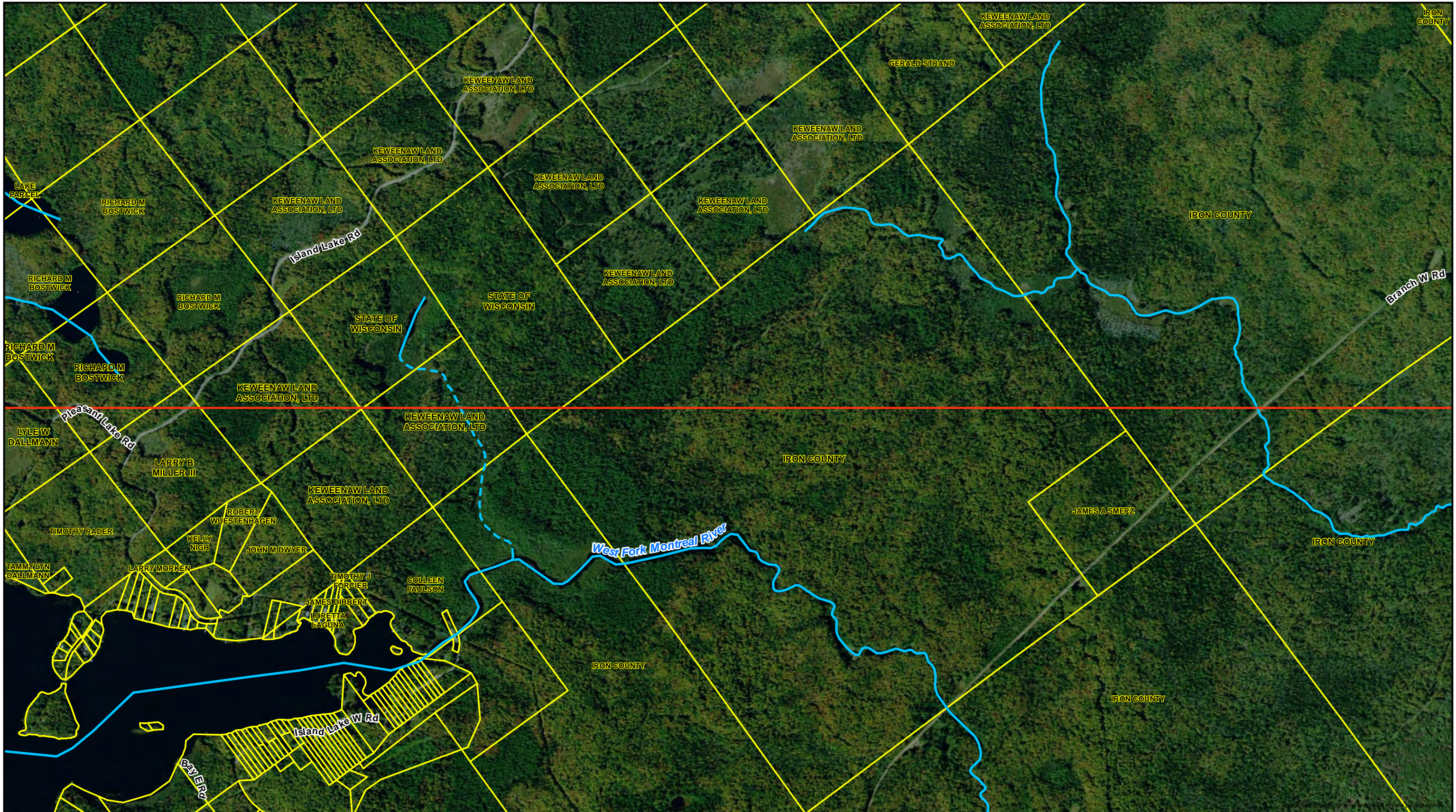
- Route Alternative Wisconsin DNR 24K Hydro
- Parcel Boundary
- Perennial Stream/River
- Intermittent Stream



**Data Request 24**  
**Route Alternative RA-03 Parcels**  
 Line 5 Wisconsin Segment Relocation Project  
 Enbridge Energy, L.P.







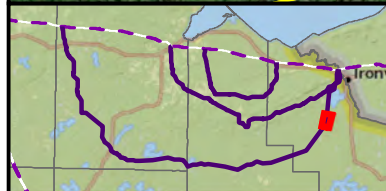
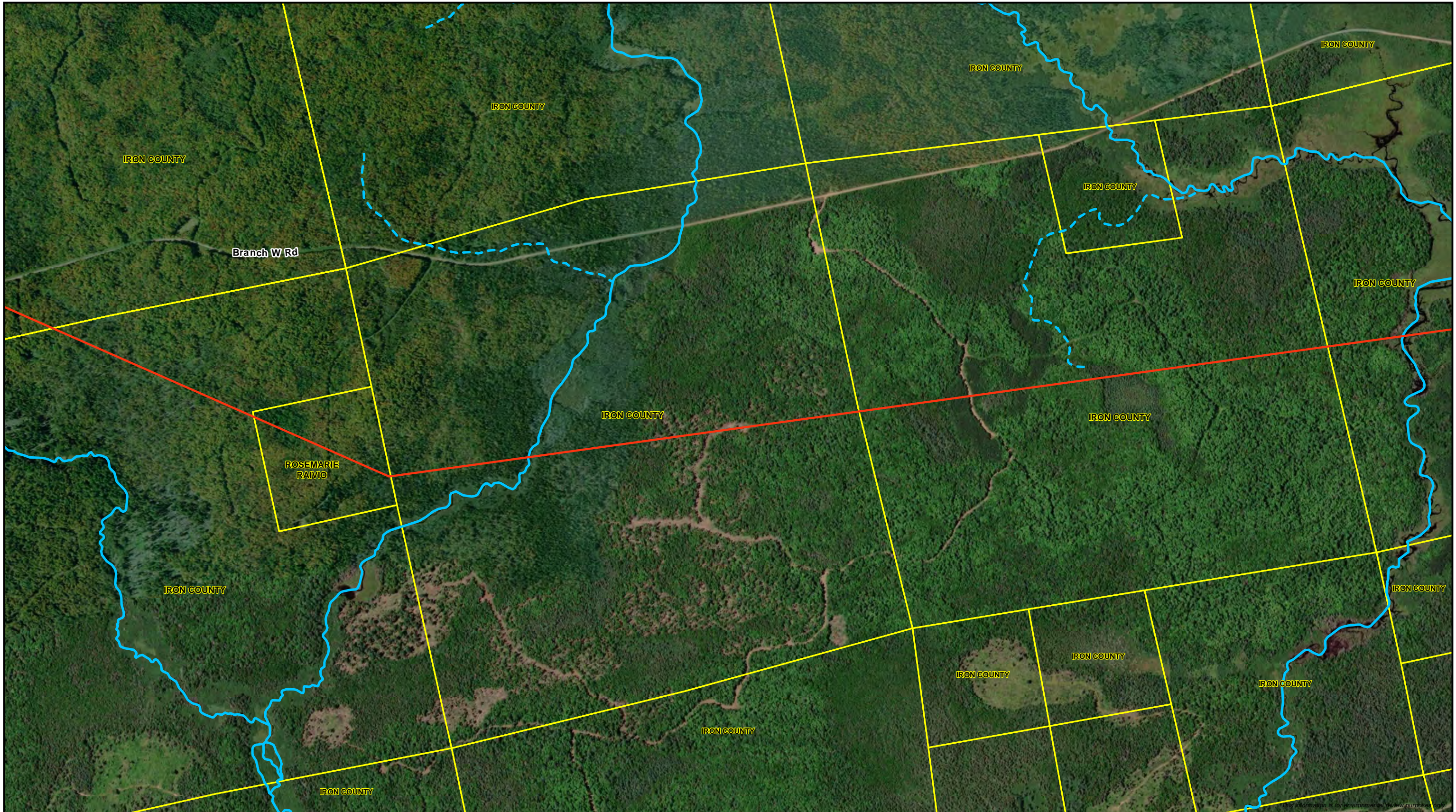
- Route Alternative Wisconsin DNR 24K Hydro
- Parcel Boundary
- Perennial Stream/River
- Intermittent Stream



**Data Request 24**  
**Route Alternative RA-03 Parcels**  
 Line 5 Wisconsin Segment Relocation Project  
 Enbridge Energy, L.P.







0 250 500  
 Feet  
 1:12,000



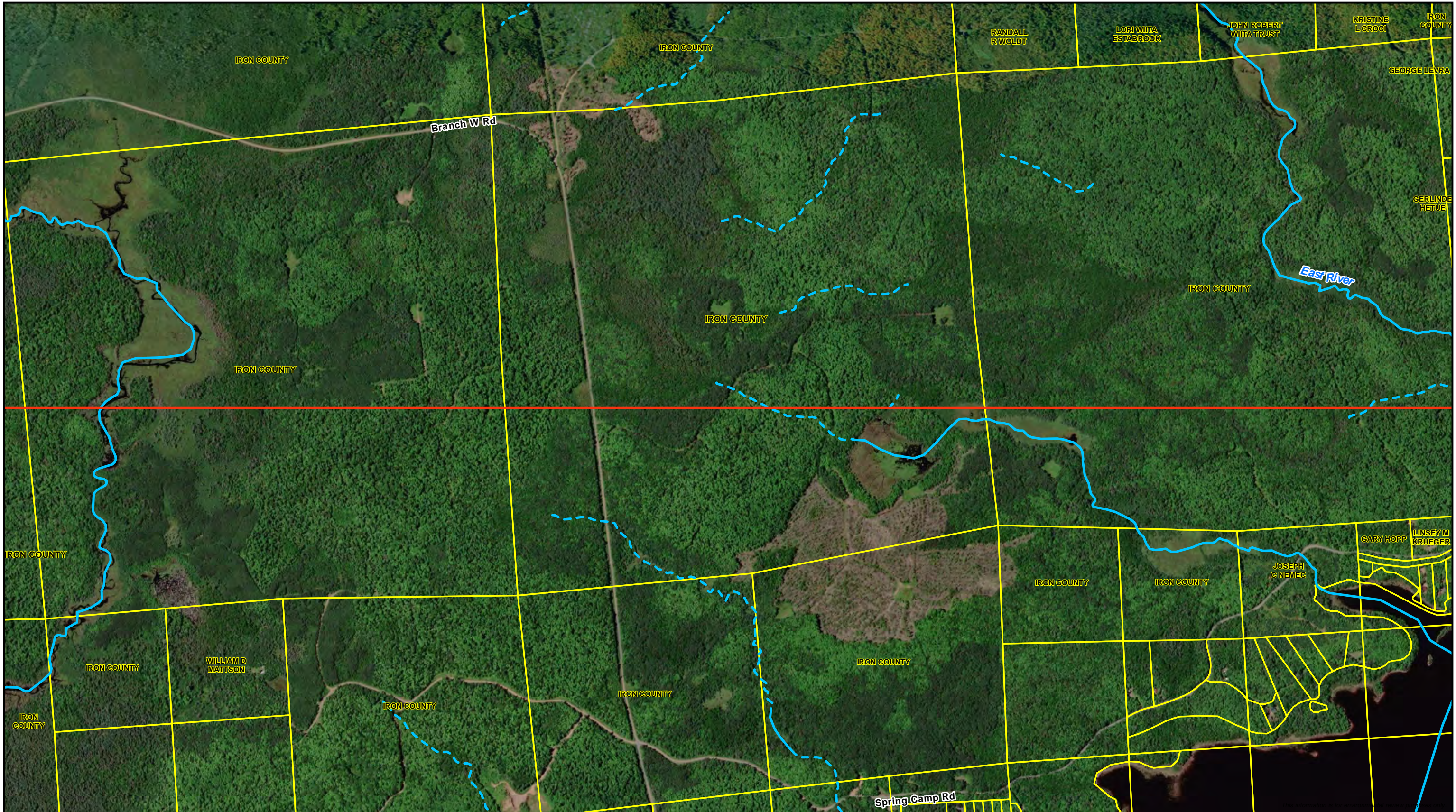
- Route Alternative Wisconsin DNR 24K Hydro
- Parcel Boundary
- Perennial Stream/River
- Intermittent Stream



**Data Request 24**  
**Route Alternative RA-03 Parcels**  
**Line 5 Wisconsin Segment Relocation Project**  
 Enbridge Energy, L.P.







0 250 500  
Feet  
1:12,000



- Route Alternative Wisconsin DNR 24K Hydro
- Parcel Boundary
- Perennial Stream/River
- Intermittent Stream



**Data Request 24**  
**Route Alternative RA-03 Parcels**  
**Line 5 Wisconsin Segment Relocation Project**  
 Enbridge Energy, L.P.

