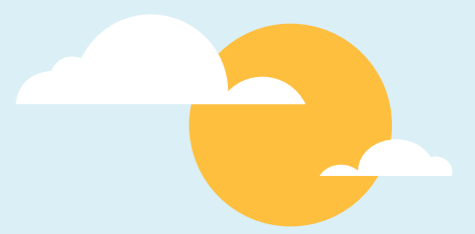


Can we trust a steel pipeline that's more than 60 years old?



Enbridge's Line 5 was built in 1953 and has operated safely since then. The quality of Line 5's design and construction exceeds today's most rigorous safety standards—the pipeline that crosses the Straits is nearly an inch thick and covered with a fiber-reinforced enamel which provides superior pipeline protection. Line 5 was built to last.

We know that well-built and maintained steel can be trusted. And there's a world of reasons to agree.

The Eiffel Tower

Opened 1889

Built for the 1889 Paris Exposition, the Eiffel Tower was never intended to be permanent but it survived after being repurposed as a giant radio tower in 1909. The construction of the Eiffel Tower took 300 workers, 18,038 pieces of wrought iron and 2.5 million rivets, and it now safely holds a restaurant and welcomes almost 7 million visitors a year.

127 years old

The Golden Gate Bridge

Opened 1937

79 years old

Since opening, the rigorous maintenance, monitoring and improvements to the Golden Gate Bridge allow it to continue to carry about 112,200 vehicles per day along its 1.7 mile span. The cables supporting the Golden Gate Bridge required 80,000 miles of steel wire, and were spun on site by the same company responsible for the cables supporting the Brooklyn Bridge.

The Sydney Harbour Bridge

Opened 1932

84 years old

Over 52,000 tons of steel went into the construction of the Sydney Harbour Bridge, which today safely supports more than 200 trains, 160,000 vehicles and 1,500 bicycles a day. Millions of dollars are spent each year on routine maintenance to make sure the bridge stays safe for years to come.

Line 5 is kept in the same great shape as these long standing landmarks through regular maintenance and inspections. All the products that enter the pipeline are also inspected and treated to prevent corrosion, and the entire system is operated at a low pressure to minimize stress on the pipe.

A lot goes into protecting the pipelines and the Straits.

History shows us that well-built and maintained steel infrastructure can safely withstand the test of time—
Line 5 is no different.

"If [a pipeline] is adequately maintained and inspected, age is not an issue."

— Deborah Hersman, Chair

Former Chair, National Transportation Safety Board